



# Public Safety Master Plan Update

February 16, 2022

# MASTER PLANNING TEAM

## MASTER PLANNING

- Indigo | Hammond & Playle Architects, LLP
- 909 5th Street, Davis CA 95616
- Bruce Playle, Principal
- Prescott Nichols, Project Manager

## PROGRAM ANALYSIS

- Greg Barker, AIA
- 120 Cerro Romauldo Ave, San Luis Obispo CA 93405

## COST ANALYSIS

- Bay Area Economics
- 803 2<sup>nd</sup> Street, Suite A, Davis CA 95616
- Matt Kowta, Principal

# SCOPE OF THIS UPDATE

- Reassess “Current” Conditions
- Confirm Space Standards & Functional Flow
- Update Staffing & Space Need Projections
- Compare Tracy to Peer Communities
- Explore Alternative Facility Plans
- Update Cost Estimations
- Reassess Project Phasing Strategy
- Select Preferred Master Plan



Think Inside the Triangle™

# PUBLIC SAFETY FACILITIES

## Animal Shelter

(2015 - 9,700 sf) 2375 Paradise Road.

## North Annex Facility

(Leased, To Be Let Go – 16,800 sf)  
1325 N MacArthur Drive, Property Storage

## Public Safety Facility

(1996 – 27,600 sf) 1000 Civic Center Dr.

## Old Tracy Police Facility

(1979, To Be Demolished - 9,800 sf)  
400 E. 10<sup>th</sup> Street, Special Investigations Div

## Capt. John J. Serpa Memorial Training Facility

(2,300 sf, 2 acres) 6649 S. Tracy Blvd.

February 16, 2022



Think Inside the Triangle™

# PUBLIC SAFETY FACILITIES

## Animal Shelter Addition

5,900 sf addition on City-owned land  
2375 Paradise Road

## Public Safety Facility Addition

2-acre expansion on City-owned land  
1000 Civic Center Drive

## South Tracy Substation

Building new 8,000 sf Public Safety Substation on  
2-acres to be purchased by City near Ellis, South  
Linne, and Tracy Hills developments.

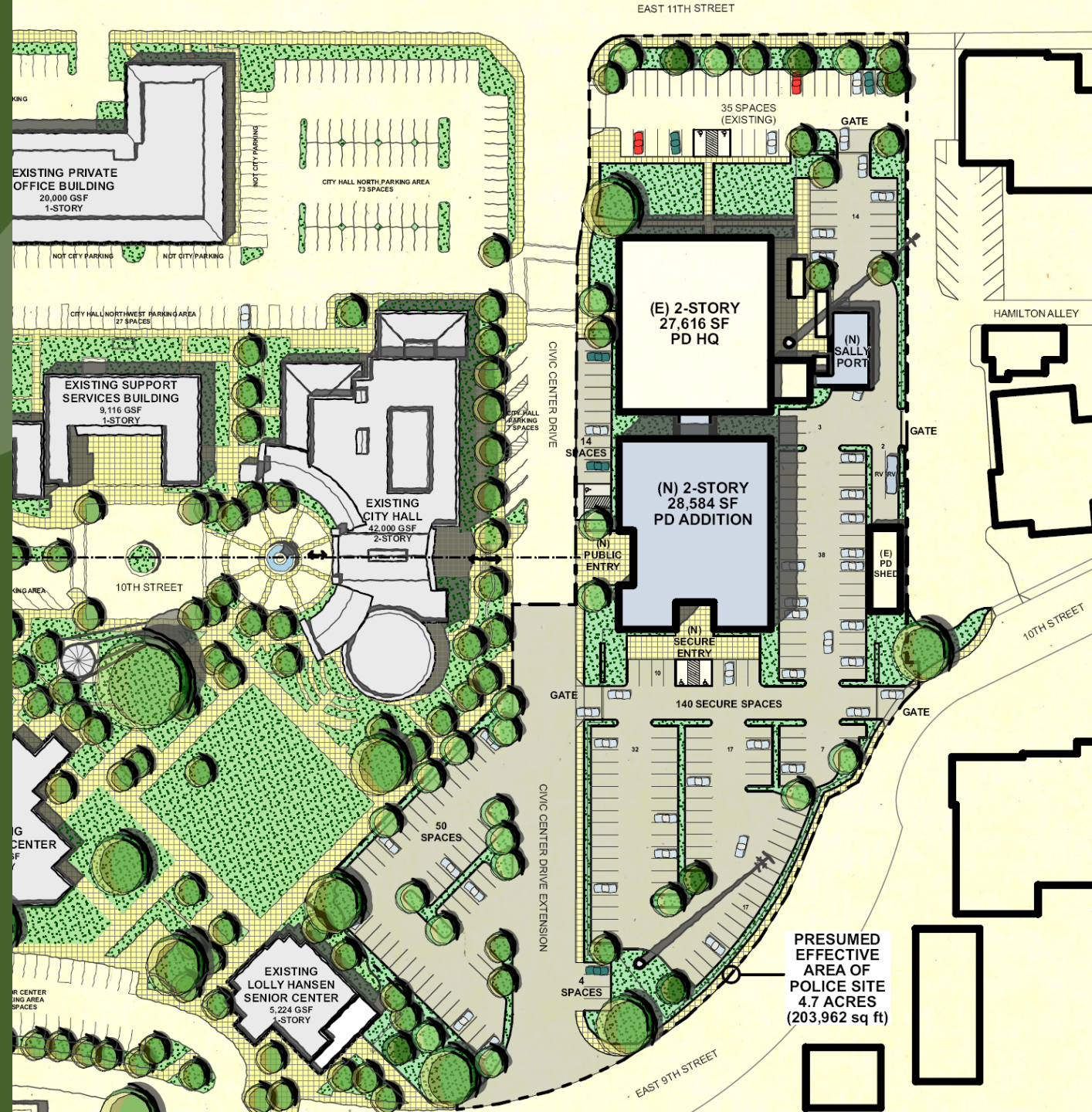
## Proposed Expansion of Capt. John J. Serpa Memorial Training Facility

Upgrading 900 sf and adding 12,900 sf of training  
facilities on City-owned land at 6649 S. Tracy Blvd

February 16, 2022

# PUBLIC SAFETY ADDITION

- Expansion of the Existing Site: 2-acres to 4.7-acres
  - Increases parking from 175 to 243 spaces, with 140 of those inside a secure enclosure
- Creates 56,200 sf all-in-one Civic Center Public Safety Facility without need to purchase land
- Some state-of-the-art elements within the facility:
  - 1,200 sf 911/ Dispatch Center
  - 1,600 sf Neighborhood Resource Unit
  - 1,900 sf Administration Offices
  - 2,200 sf Emergency Operations Center
  - Public Lobby and Reception, Community Meeting Room, Live Scan, Interview Rooms, Fitness Room, and Locker Rooms





# City of Tracy

## Public Safety Annex



Think Inside the Triangle™

# PUBLIC SAFETY FACILITIES

## Planned 2<sup>nd</sup> Phase Addition to Animal Shelter

5,900 sf addition on City-owned land, 2375 Paradise Rd

## Proposed Addition to Public Safety Facility

2-acre 28,600 sf addition on City-owned land  
1000 Civic Center Drive

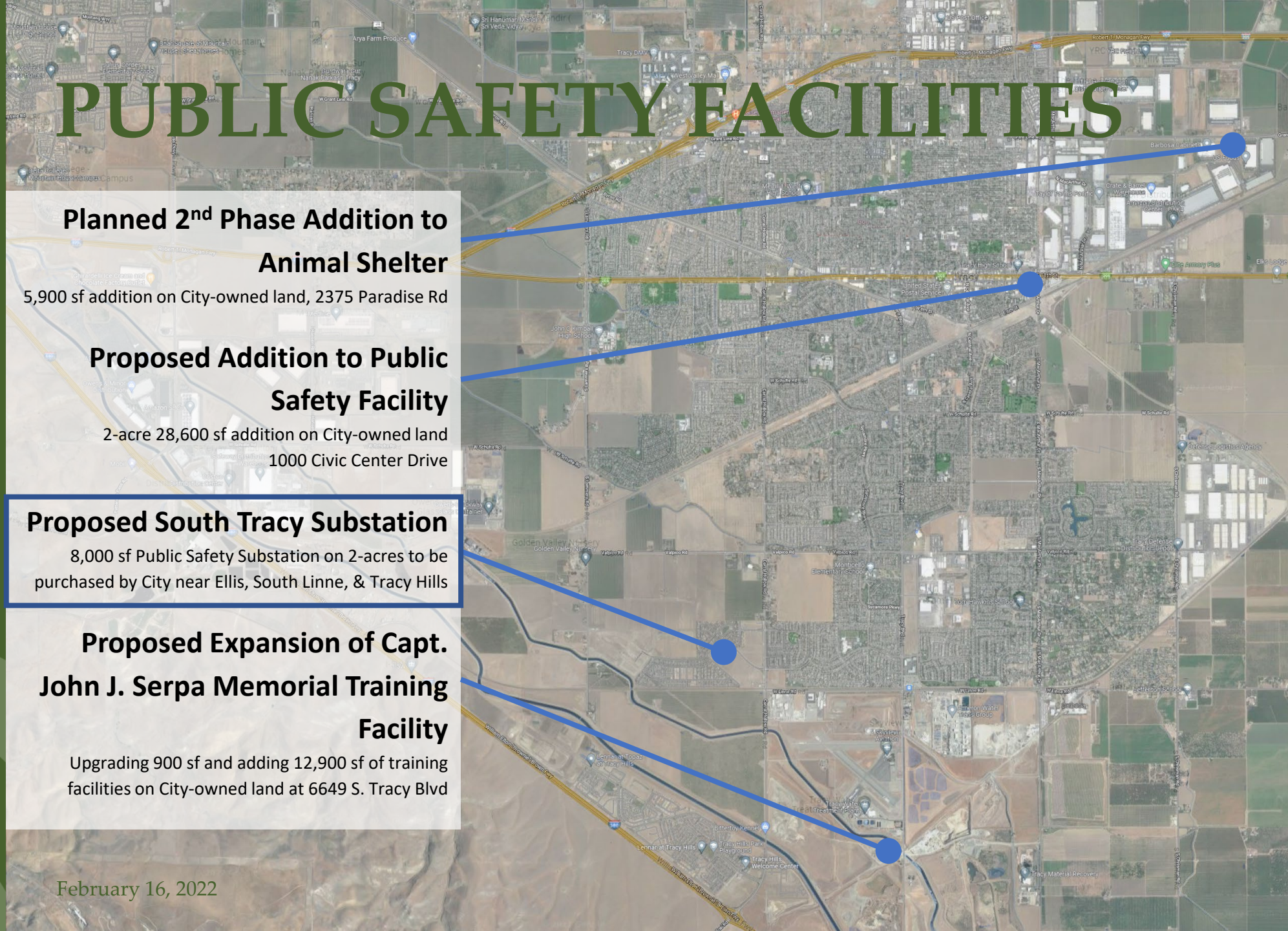
## Proposed South Tracy Substation

8,000 sf Public Safety Substation on 2-acres to be purchased by City near Ellis, South Linne, & Tracy Hills

## Proposed Expansion of Capt. John J. Serpa Memorial Training Facility

Upgrading 900 sf and adding 12,900 sf of training facilities on City-owned land at 6649 S. Tracy Blvd

February 16, 2022







# SOUTH TRACY SUBSTATION

New 8,000 sf facility on 2-acres to be purchased by City:

- Open Office space for up to 12 workstations
- Private Office space for up to 6 workstations
- Briefing and Community Meeting Room
- Locker and Gym facilities
- Covered Courtyard
- Public Lobby and Reception Counter

February 16, 2022





Think Inside the Triangle™

# CITY FIRE FACILITIES

- Station 96**  
(2014 - 5,100 sf) 1800 W. Grant Line Rd
- Station 92**  
(2014 - 5,100 sf) 1035 E. Grant Line Rd.
- Station 91**  
(2005 - 7,400 sf) 1701 West 11<sup>th</sup> St.
- Administration Building**  
(1916 - 9,700 sf) 835 Central Ave.
- Fire Training Facility**  
(2021 - 8,100 sf) 1399 S. Chrisman Road.
- Station 97**  
(1986, To Be Relocated - 3,000 sf)  
595 West Central Ave.
- Station 95**  
(2021 - 7,100 sf) 7151 Tracy Hills Drive.

February 16, 2022





Think Inside the Triangle™

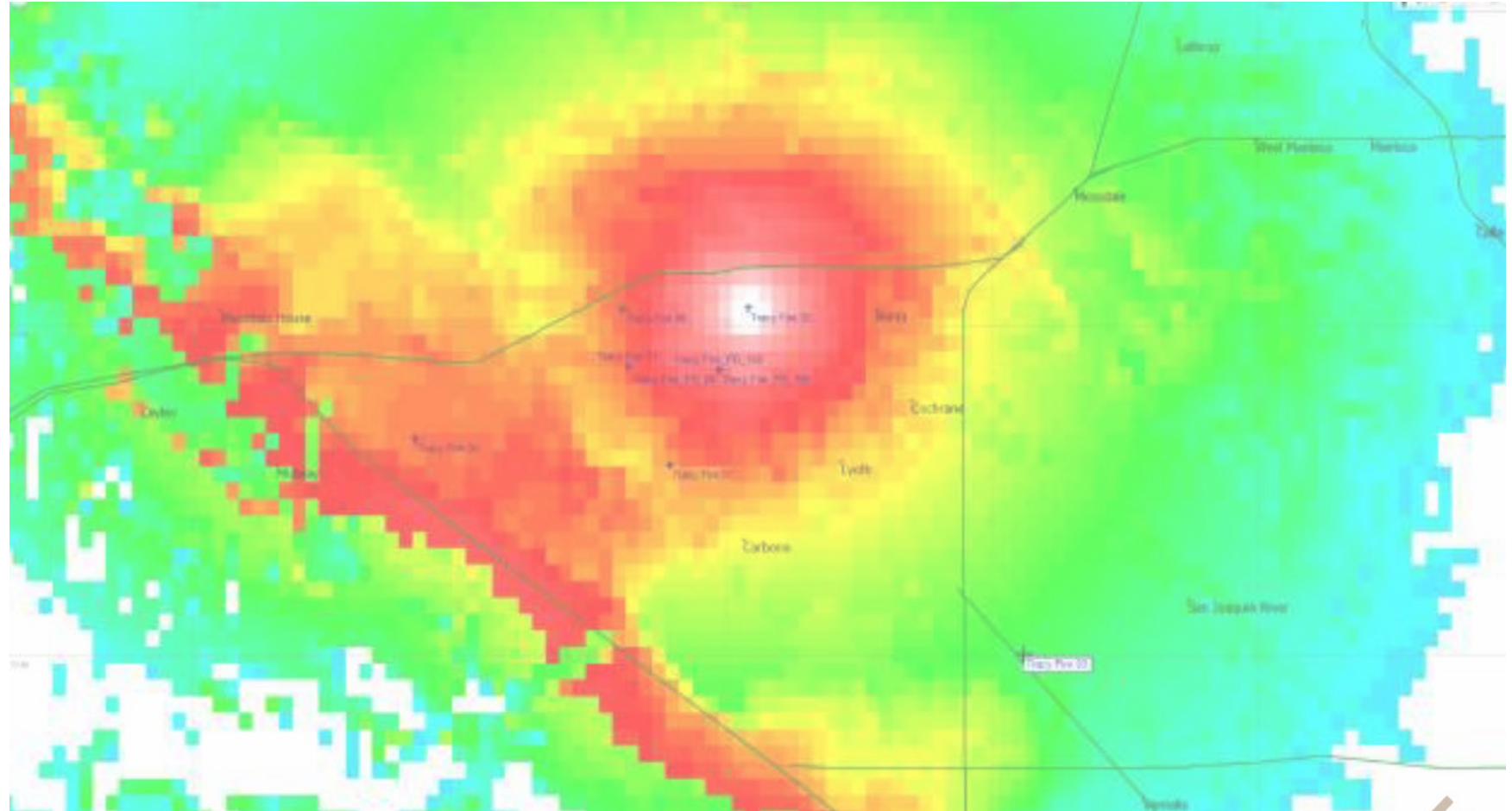
# CITY FIRE FACILITIES

**Relocated Fire Station 97**  
Building new 8,000 sf Fire Station on 2-acres near Ellis with apparatus bay sized for ladder truck.

February 16, 2022



# PUBLIC SAFETY COMMUNICATIONS TOWER AND RADIO SYSTEM



The new Public Safety Communications Tower and Radio System will be a two Site Simulcast System consisting of a 180-foot tower that will deliver consistently stronger signals to address the future development.

February 16, 2022



Indigo Hammond & Playle Architects, LLP



Think Inside the Triangle™

