

**SYSTEMS:
STORM DRAIN VS.
SANITARY SEWER**

Storm drain and sanitary sewer systems have two distinct functions. It is very important to understand the difference.

Catch basins are the entryway into the **Storm Drain System** and are typically located at the bottom of a hill or at street corners. This system collects and transports water and other liquids away from these areas and out to a local waterbody untreated. The Storm Drain System does not remove pollutants from water before it is discharged into streams and rivers.



The **Sanitary Sewer System** collects wastewater from indoor plumbing such as sinks, toilets, washing machines, and floor drains where it is transported through underground pipes to a sewage treatment plant. The treatment plant removes many pollutants from wastewater before it is discharged back into a river.

NO DUMPING!

FOR MORE INFORMATION ON

STORMWATER POLLUTION:

Contact your local Stormwater Management Office:

City of Tracy	(209) 831-6333
County of San Joaquin	(209) 468-2179 or 3073 http://www.co.san-joaquin.ca.us/pubworks/NPDES.htm
City of Lathrop	(209) 858-2860 ext. 328
City of Lodi	(209) 368-5735
City of Manteca	(209) 239-2839
City of Ripon	(209) 599-2108
City of Stockton	(209) 937-8791

SANITARY SEWER DISCHARGES—CONNECTIONS:

City of Tracy Utilities Division	(209) 831-6331
----------------------------------	----------------

HAZARDOUS WASTE DISPOSAL:

Tracy Materials Recovery Facility	(209) 832-2355
County of San Joaquin	(209) 468-3066

TO REPORT ILLEGAL DISCHARGES:

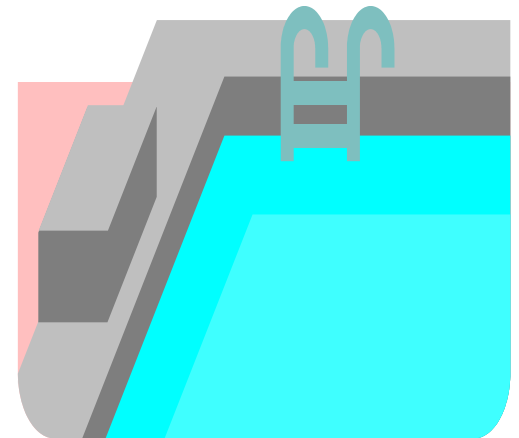
City of Tracy	(209) 831-6332
County of San Joaquin	(209) 468-3055
City of Lathrop	(209) 858-2860 ext. 328
City of Lodi	(209) 368-5735
City of Manteca	(209) 239-8460
City of Ripon	(209) 599-2108
City of Stockton	(209) 937-8791



PROTECT THE ENVIRONMENT!

**POOL WATER
POLLUTES –
DISPOSE OF IT
PROPERLY .**

*Do your part.
Help keep chlorine
and other pool and
spa chemicals out of
the storm drain
system.*



**TRACY STORMWATER
MANAGEMENT PROGRAM**

Tel: 209—831—6333

STORMWATER POLLUTION SOLUTIONS

DISPOSE OF SWIMMING POOL AND SPA WASTES THE PROPER WAY

Residential neighborhoods are common sources of urban runoff pollution. Two of these sources are swimming pools and spas. Discharges from these sources may contain chlorine, copper and filter backwash. These types of discharges into the storm drain system, by way of street gutters, has a direct impact on our local creeks and rivers.

Discharge or disposal of chemically treated water from a swimming pool or spa into the storm drain system violates both federal and state laws as well as city and county stormwater ordinances. Dischargers may be held liable for cleanup costs and subject to fines.

It is not only the law but an important civic responsibility to properly dispose of these types of waters. Urban runoff pollution contaminates our creeks and rivers, and is harmful to our aquatic life.



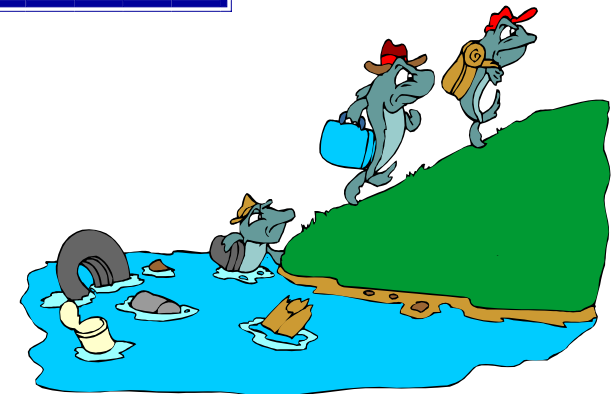
DON'T discharge:

- ⇒ **Swimming pool water containing chlorine at levels higher than 0.01 parts per million (ppm) to the storm drain system.** Chlorine levels higher than this are harmful to aquatic organisms and exceed levels allowed by the State Department of Fish and Game. The typical chlorine level maintained in all pools 2 - 4 ppm.
- ⇒ **Wastes from acid washing to the storm drain system AND don't discharge this waste to the sanitary sewer without neutralizing it first.**
- ⇒ **Waste or wastewater from plastering or grouting to either the storm drain or sanitary sewer systems**

- ⇒ **Swimming Pool water containing copper to the storm drain system.** Copper in your pool may come from some algae control products, from copper plumbing and copper equipment like heaters. Typically recommended dosages for copper algicides are about 100 times higher than other concentrations that are toxic to many aquatic organisms.
- ⇒ **Filter backwash into the storm drain system.**

DO follow these guidelines:

- ⇒ **Discharge pool water containing copper or chlorine to the sanitary sewer system through a sewer cleanout, laundry sink, or other interior plumbing fixtures.** The sanitary sewer system is designed to remove many pollutants from water.
- ⇒ **Dechlorinate your pool water prior to discharge to the storm drain system.** This can be accomplished by adding a chemical dechlorinator or by letting the chlorine level decrease on its own. Test the chlorine level to determine when the water may be discharged to the storm drain system.
- ⇒ **Discharge your pool water to the street only if you know that it does not contain harmful concentrations of chlorine and copper (see left panel).** A local pool company or lab can determine your concentration levels.
- ⇒ **Use copper algicides only when completely necessary.** Such as when less toxic algae control products are ineffective.
- ⇒ **Maintain the proper chemical balance and filtration in your pool.** This will minimize the need to drain the pool and prevent unnecessary corrosion of copper pipes and equipment.
- ⇒ **Plumb your filter backwash to the sanitary sewer system according to the local building codes.**
- ⇒ **Dispose of wastewater from washing cartridge filters in a dirt area or to the sanitary sewer system in compliance with our local sanitation district requirements. (see right side)**
- ⇒ **Dispose of spent diatomaceous earth filter medium in the garbage.**



Guidelines for sanitary sewer system discharges:

- ⇒ **Never open a manhole to discharge your pool water.**
- ⇒ **If you do not install a permanent plumbing connection and discharge less than 25,000 gallons per day, you do not need a permit.** However, the rate of discharge cannot cause the sewer to back up into the street, your surrounding neighborhood or your home.
- ⇒ **Provide a settling tank for filter backwash discharges to the sanitary sewer system.**
- ⇒ **If you install a permanent plumbing connection to the sanitary sewer system, you must follow these guidelines:**
 - Obtain a sewer connection permit from the City of Tracy Utilities Division or the city that you live in.
 - Pool connections to rainfall overflow are subject to connection fees, which are determined by the City of Tracy Utilities Division.
 - Discharge of more than 25,000 gallons per day requires approval from the City of Tracy Utilities Division.
 - If you have any questions about discharging to the sanitary sewer system., please call the City of Tracy Utilities Division at (209) 831-4490.

Contact numbers and disposal options are listed on the