

Kavanaugh
X
Tracy Blvd
Covelo
Grant Ave

Master Sign Program
Approved 6/12/00
-VJY

SIGN SPECIFICATIONS THE PLAZA ON TRACY BLVD. 2750 TRACY BLVD. SUITES 1-6

All signs drawings for future tenants located within this Planned Unit Development (PUD) must be submitted to and approved by the City of Tracy Community Development Department. All signs shall comply with the City of Tracy Municipal Code Sign Ordinance.

All signs must meet the following criteria:

SIGNS: Reverse pan channel halo lit letters. Letters to be 4" inches in depth with white neon mounted to a Lexan backing offset a minimum of 1" from the wall.

RETURNS: All letters will be constructed of standard metal

COLOR: All letter colors will be either black or smoke.

SIZE: No letter shall exceed 20" inches in height.

LIGHTING: All letters shall be lit with white neon.

All signs with logos must meet the following criteria:

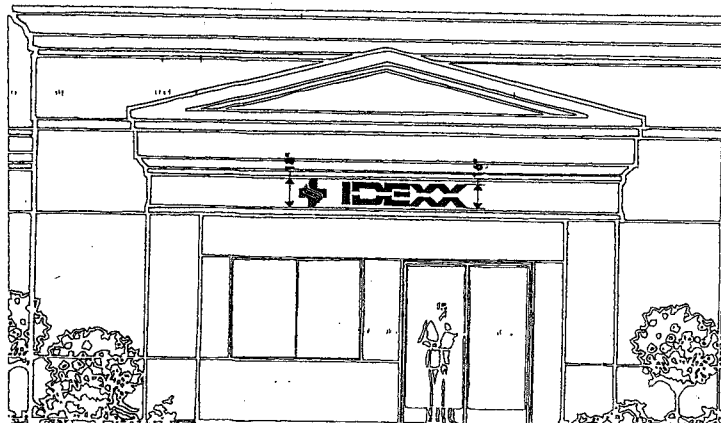
LOGOS: Halo pan channel with lit face. Black aluminum returns halo lit, white face, colored vinyl graphics, and black trim cap.

LOGO SIZE: No logo shall exceed 24" x 24" inches in height.

COLOR: Color graphics will be allowed on logo face.

All signs must include UL approved construction and conform to the National Electric Code.

For additional information regarding the construction of the signs please call The Plaza on Tracy Blvd. Owner's Association c/o Paul D. Frank 916-354-1801 P.O. Box 1341, Rancho Murieta, CA 95683



DRAWING SAMPLE ONLY.



SIGN CRITERIA

The following criteria on Exhibit "A" attached hereto has been established to provide a uniform look for The Plaza on Tracy Boulevard.

All signs will be subject to the following:

1. All sign drawings must be approved by declarant prior to manufacture.
2. All signs must conform to the City of Tracy sign code.
3. Permits must be obtained by tenants prior to manufacture.
4. All signs must include UL approved construction and conform to the National Electric Code.
5. All tenants shall be allowed rear or side signs, if there is applicable space, subject to declarant and City approvals. Signs will be manufactured as shown on Exhibit "A" attached hereto.
6. For further information regarding the construction of the signs please call, Frank Altamirano, Express Signs (916) 391-2323 or (800) 704-7090.

EXHIBIT "A"
THE PLAZA ON TRACY BLVD. SIGN SPECIFICATIONS

SIGNS: REVERSE PAN CHANNEL HALO LT LETTERS, LETTER TO BE 4" INCHES IN DEPTH WITH WHITE NEON MOUNTED TO A LEXAN BACKING OFFSET A MINIMUM OF 1" INCH FROM THE WALL.

RETURNS: ALL LETTERS WILL BE CONSTRUCTED OF STANDARD METAL.

COLORS: ALL LETTER COLORS WILL BE BLACK OR SMOKE.

SIZE: NO LETTER SHALL EXCEED 20" INCHES IN HEIGHT.

LIGHTING: ALL LETTERS SHALL BE LT WITH WHITE NEON.

LOGOS: HALO PAN CHANNEL WITH LT FACE, BLACK ALUMINUM RETURNS HALO LT, WHITE FACE, COLORED VINYL GRAPHICS, AND BLACK TRIM CAP.

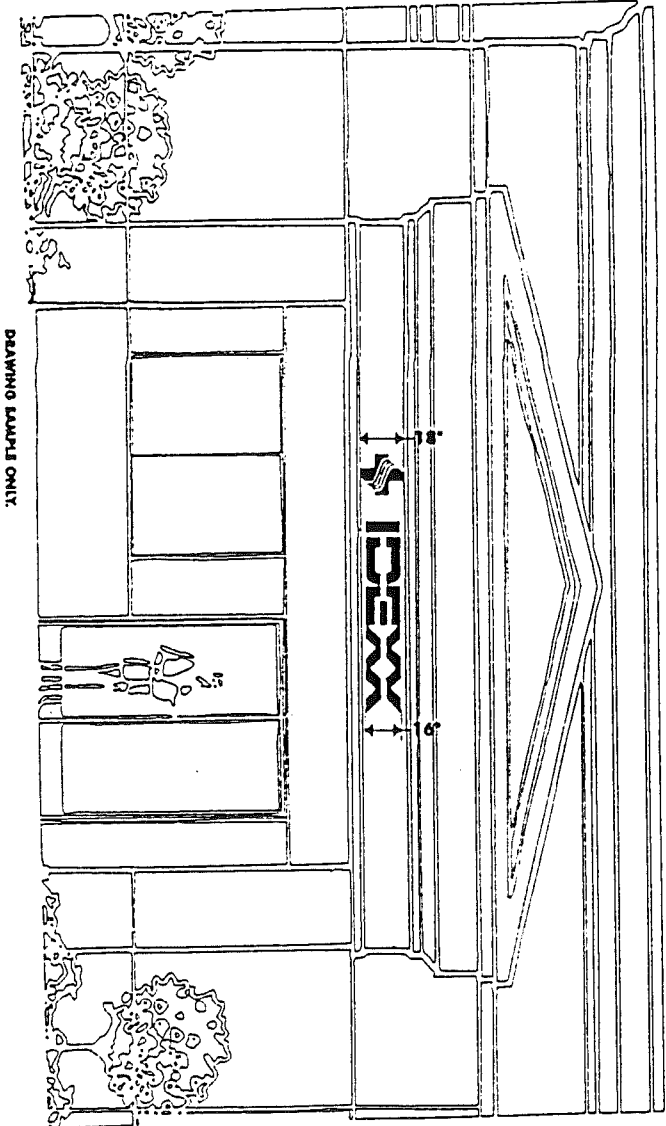
LOGO SIZE: NO LOGO SHALL EXCEED 24" X 24" INCHES IN HEIGHT.

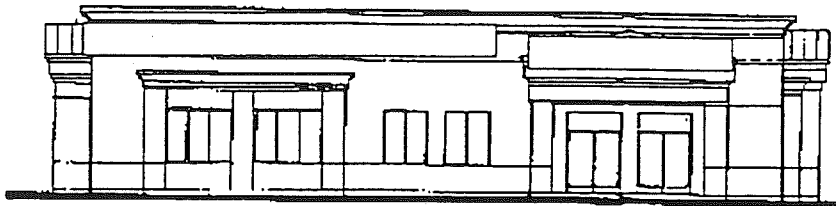
COLORS: COLOR GRAPHICS WILL BE ALLOWED ON LOGO FACE.

ALL LETTER STYLES AND LOGOS MUST BE SUBMITTED AND APPROVED BY DECLARANT.

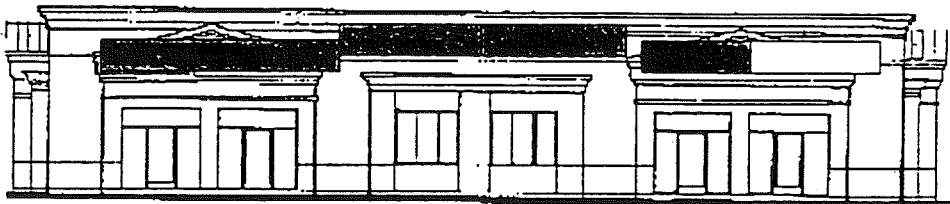
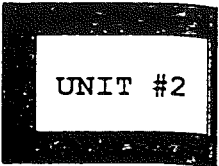
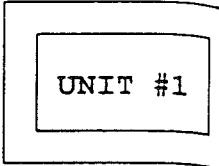
Express Signs

2660 Rockin Rd., Ste. 102A
Sacramento, CA 95822
(916) 391-2323
(800) 704-7090

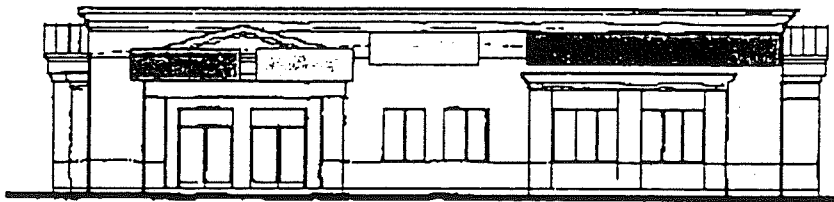
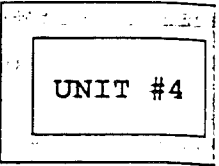
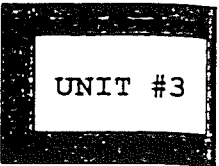




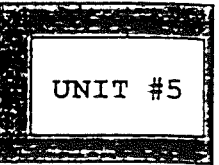
NORTH ELEVATION



EAST ELEVATION



SOUTH ELEVATION



WEST ELEVATION

** All signage is explicitly subject to the City of Tracy's approval and Declarant's approval prior to empowerment of the Association and thereafter by the Association.