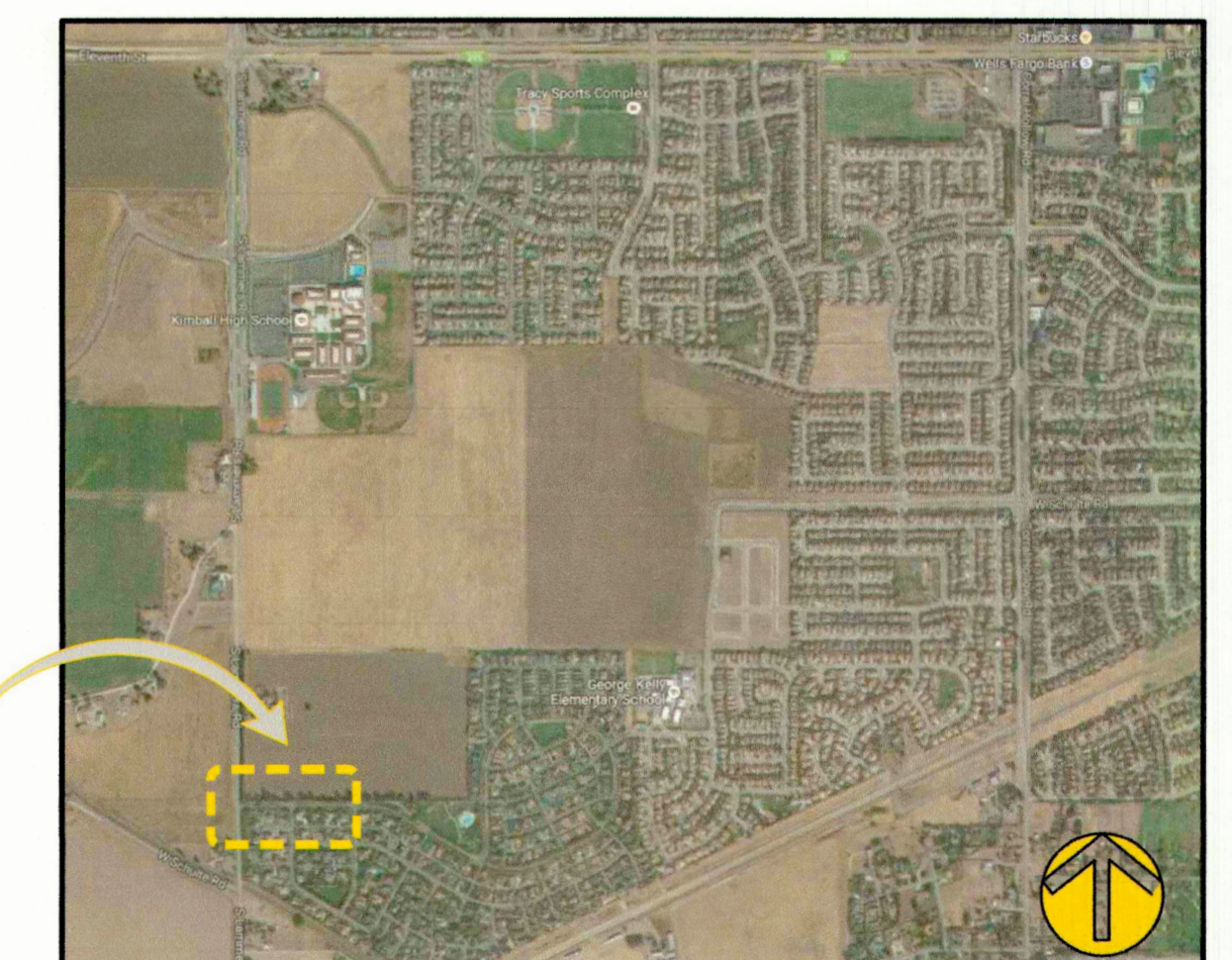


RECEIVED  
MAY 24 2018  
CITY OF TRACY  
DEPARTMENT SERVICES



Aerial of Existing Site

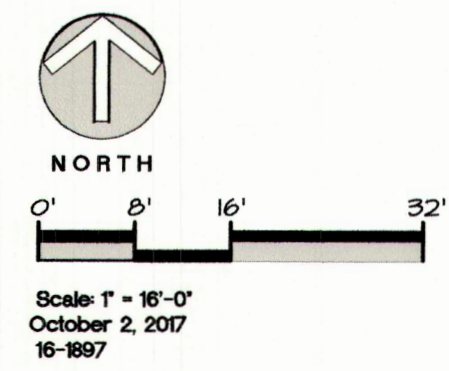
Not to scale



Aerial Location Map



NORTH  
Not to scale



# L0.1

# Redbridge Entry Drive and Guardhouse Schematic Gated Entry - Site/Landscape Plan

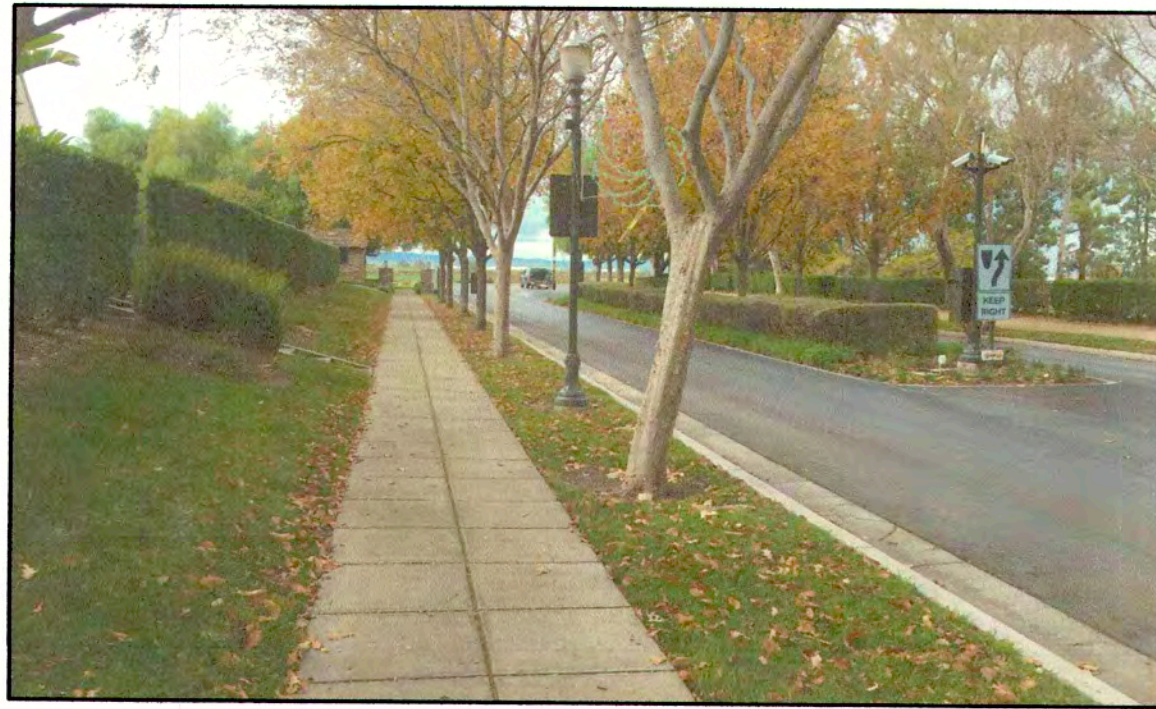




Redbridge Road from Lammers Road



Entry Feature



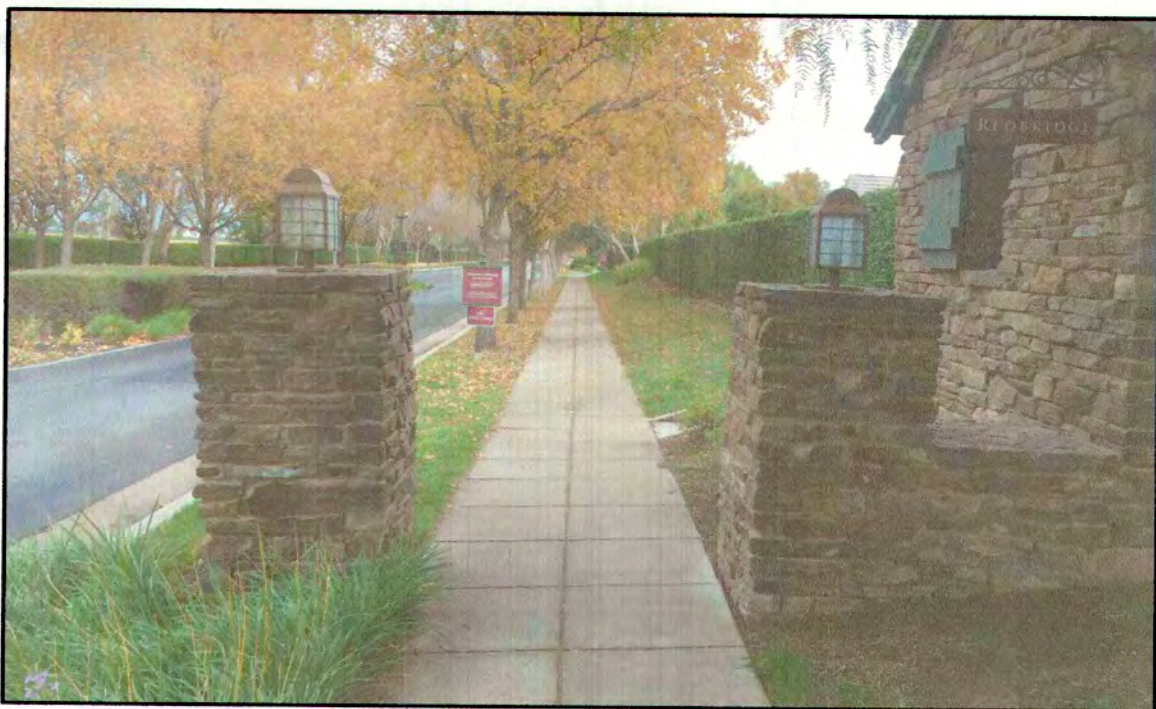
Redbridge Road Looking West



D.G. Path on North Side of Redbridge Road



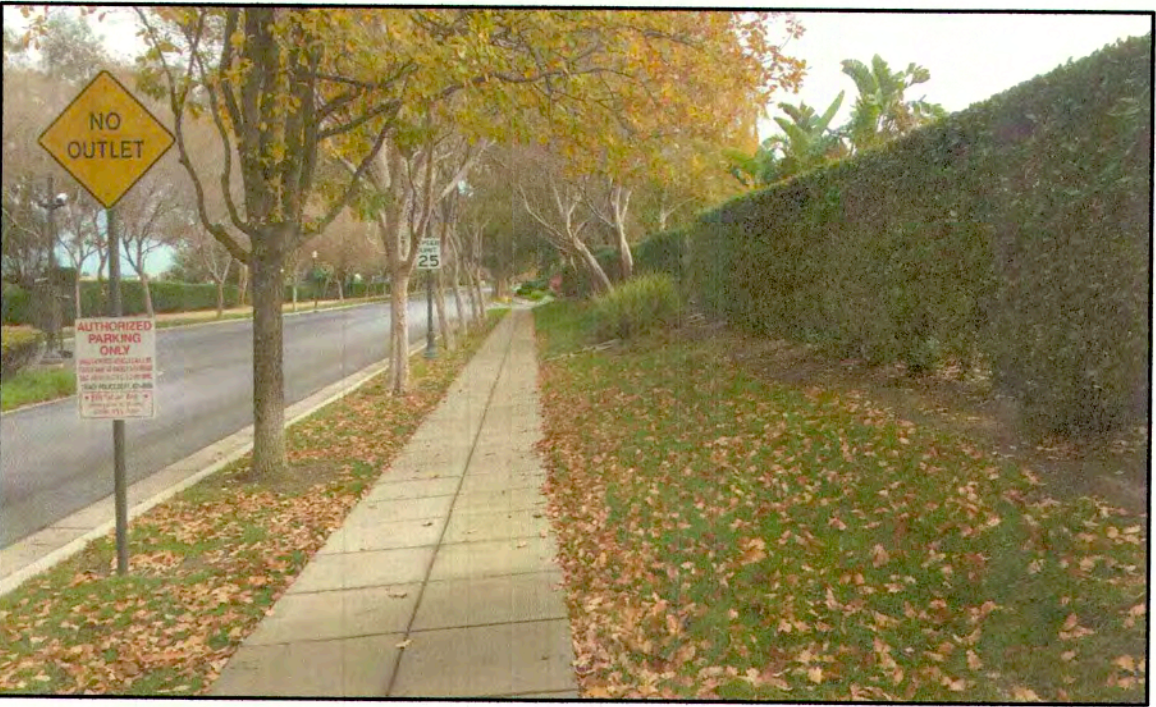
Redbridge Road Looking East



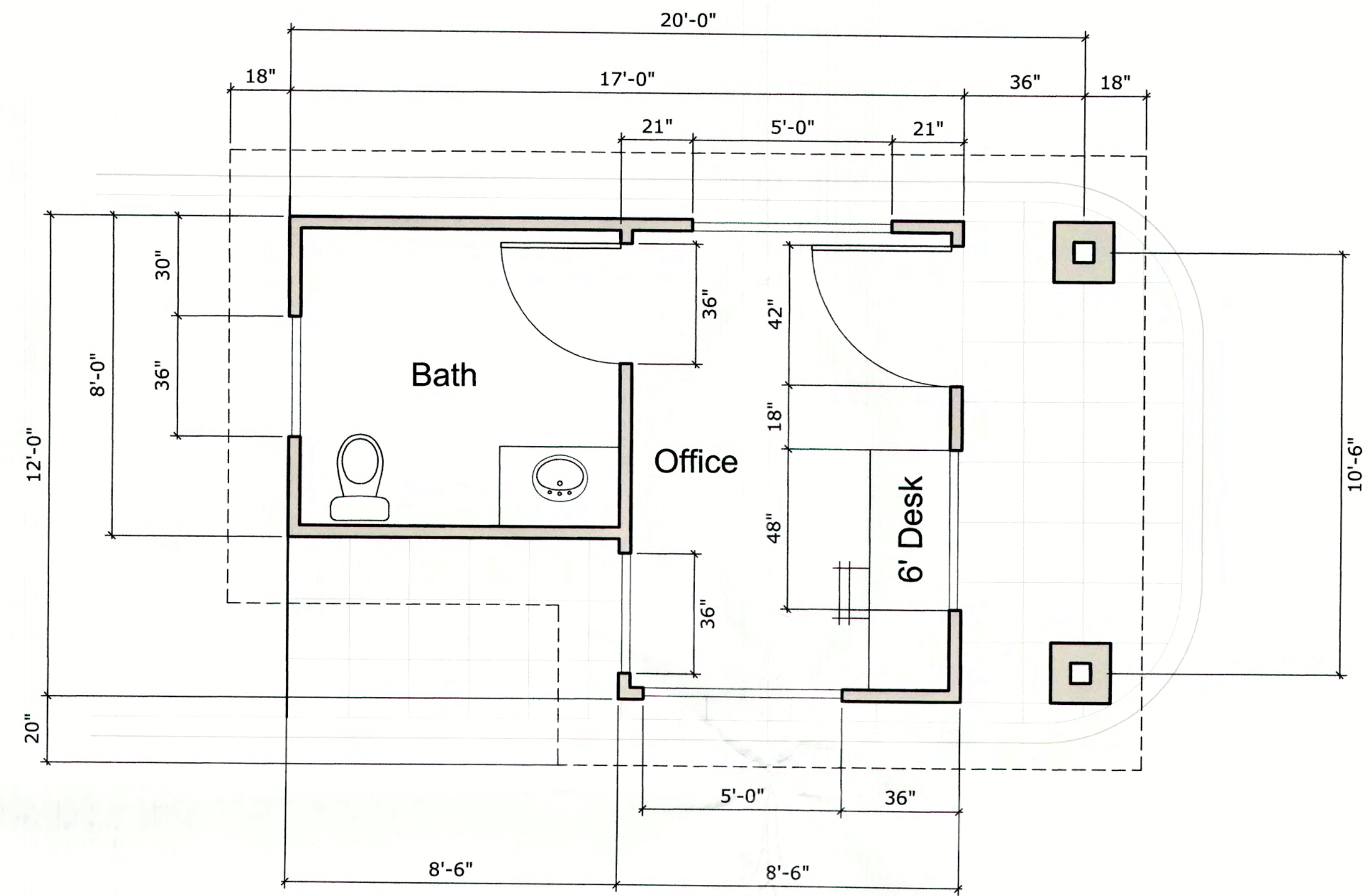
Existing Redbridge Entry



North Side of Redbridge Road



South Side of Redbridge Road



**Guardhouse Floor Plan**

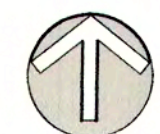
Scale: 3/8"=1'-0"



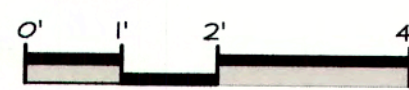
Redbridge General Store



Redbridge General Store



NORTH

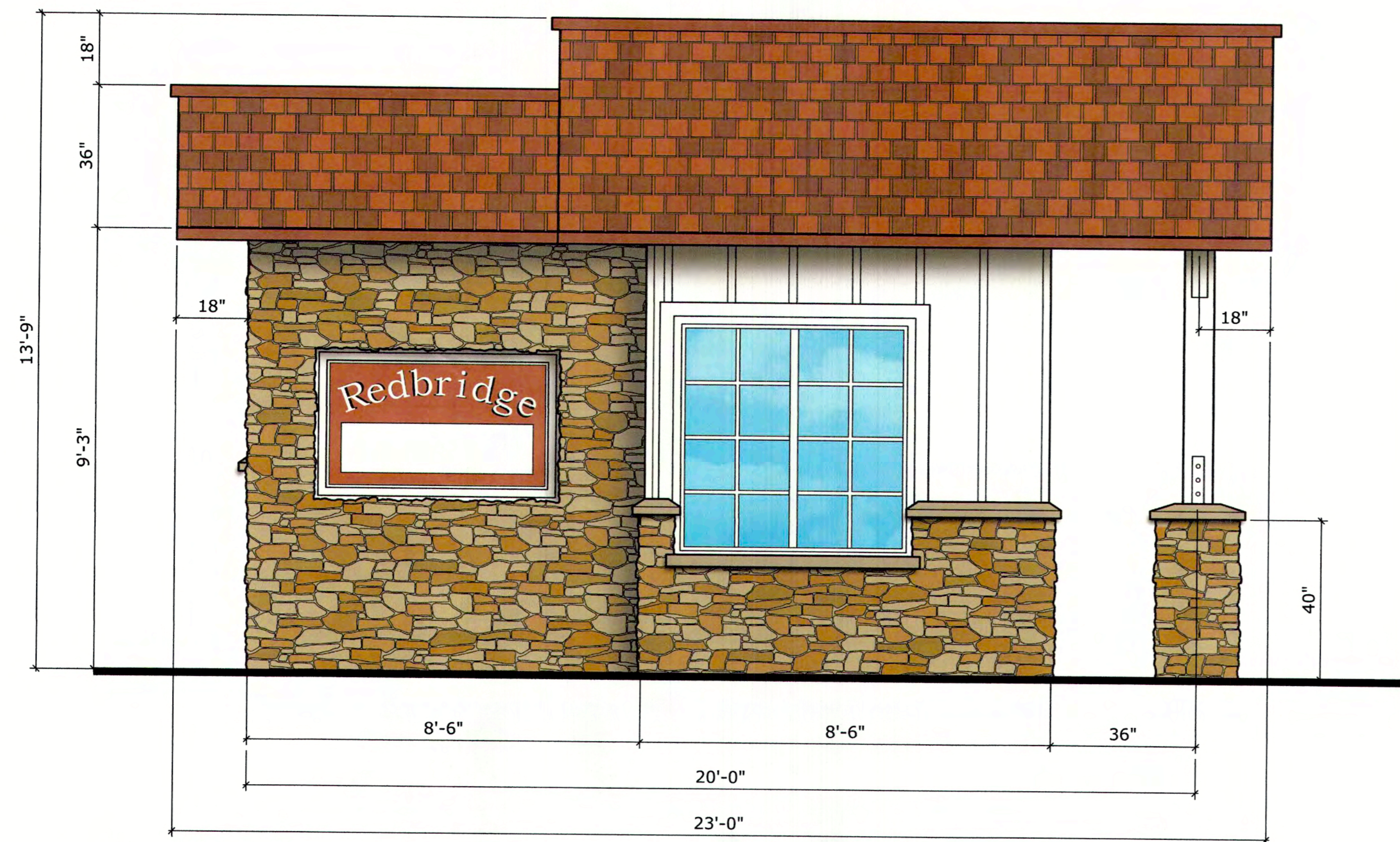


Scale: 3/8" = 1'-0"  
October 2, 2017  
16-1897

**L0.2**

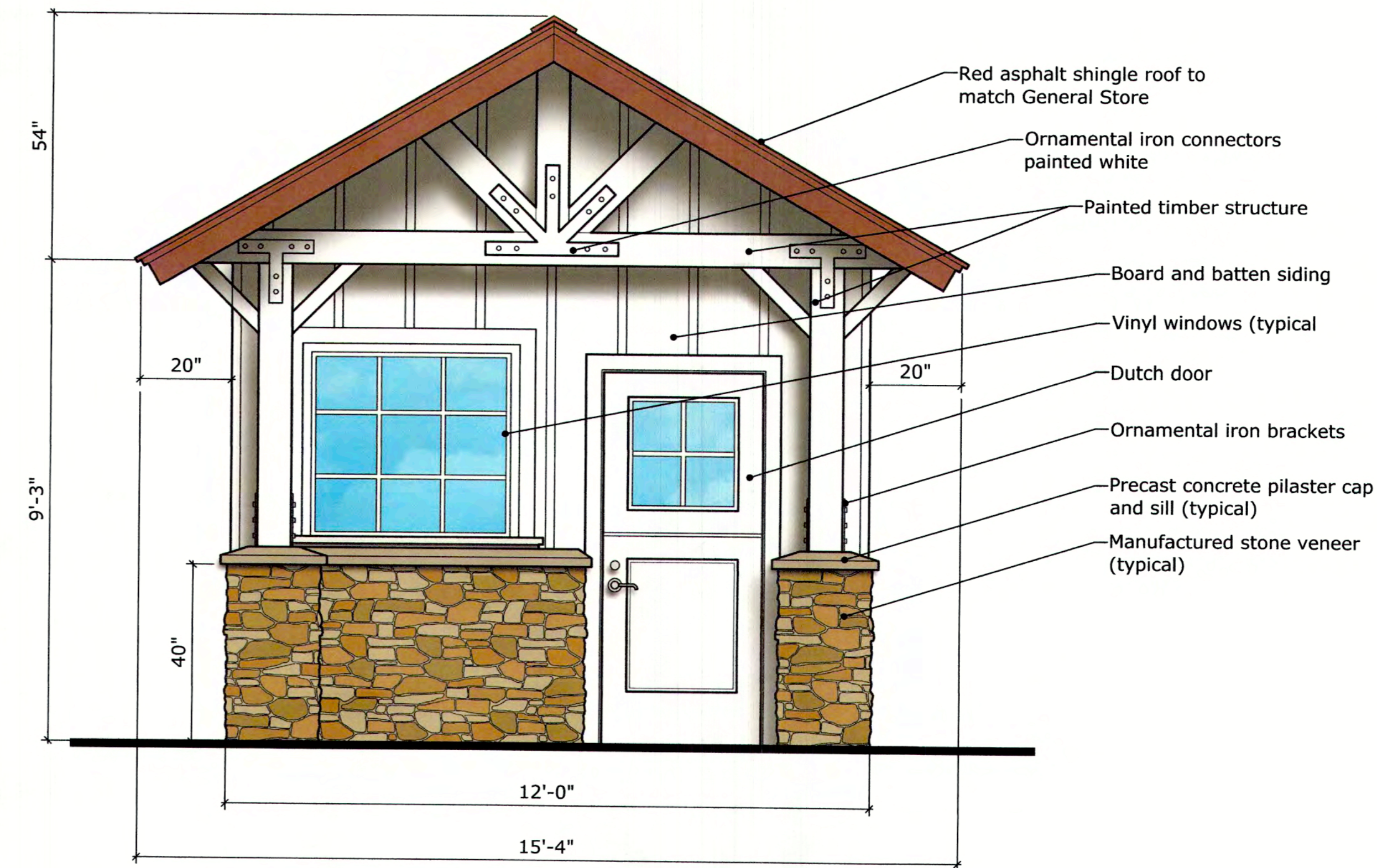
**Redbridge Entry Drive and Guardhouse  
Guardhouse Floor Plan and Site Photos**





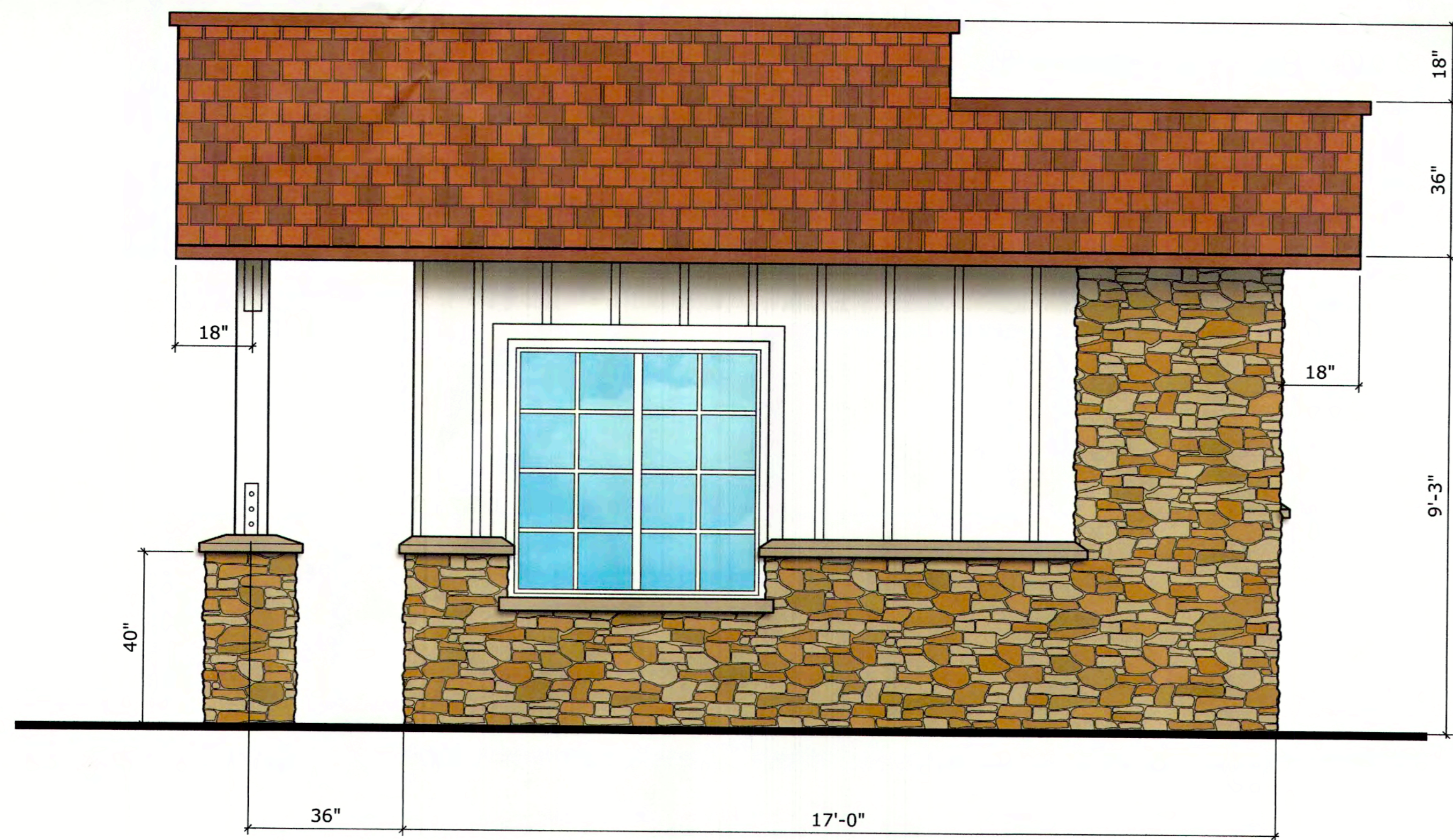
**South Elevation**

Scale: 1/2"=1'-0"



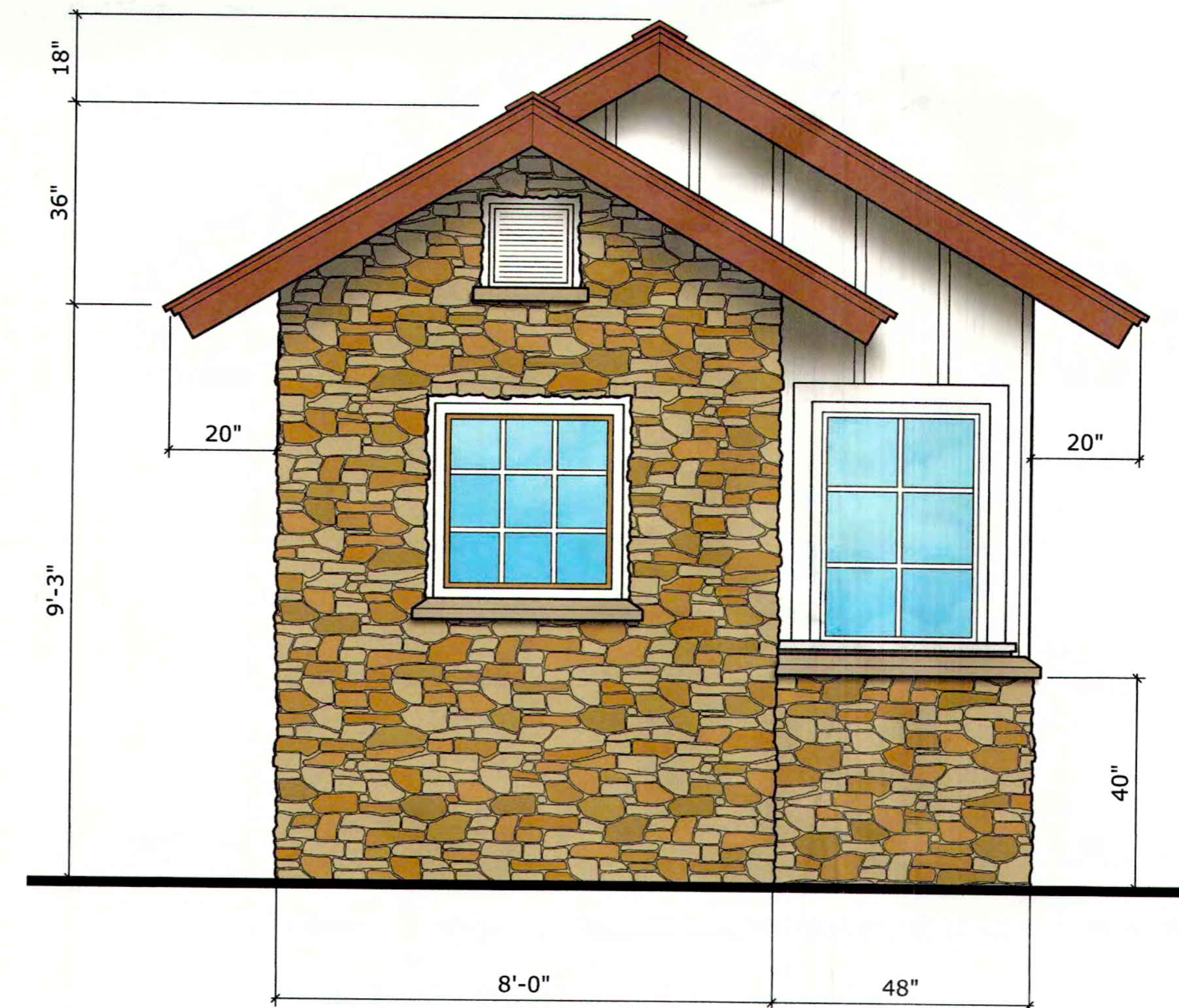
**East Elevation**

Scale: 1/2"=1'-0"



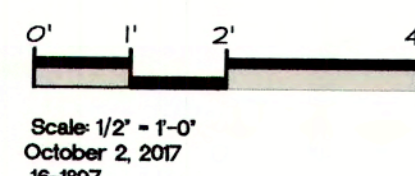
**North Elevation**

Scale: 1/2"=1'-0"



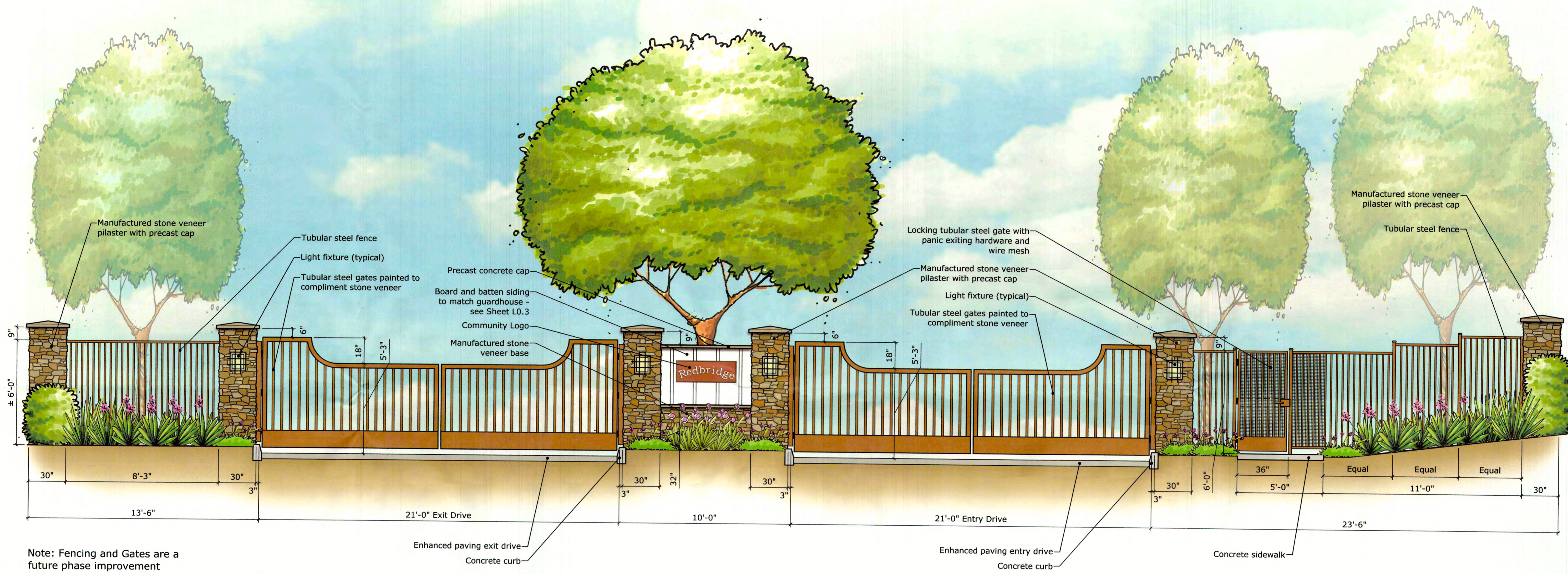
**West Elevation**

Scale: 1/2"=1'-0"



Scale: 1/2" = 1'-0"  
October 2, 2007  
16-1887





Stone Veneer



Board and Batten Siding



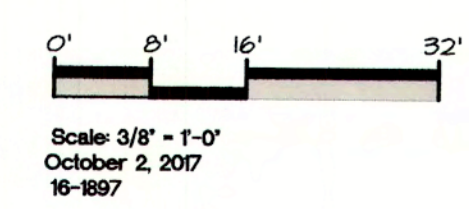
Asphalt Shingle Roof



Pavers



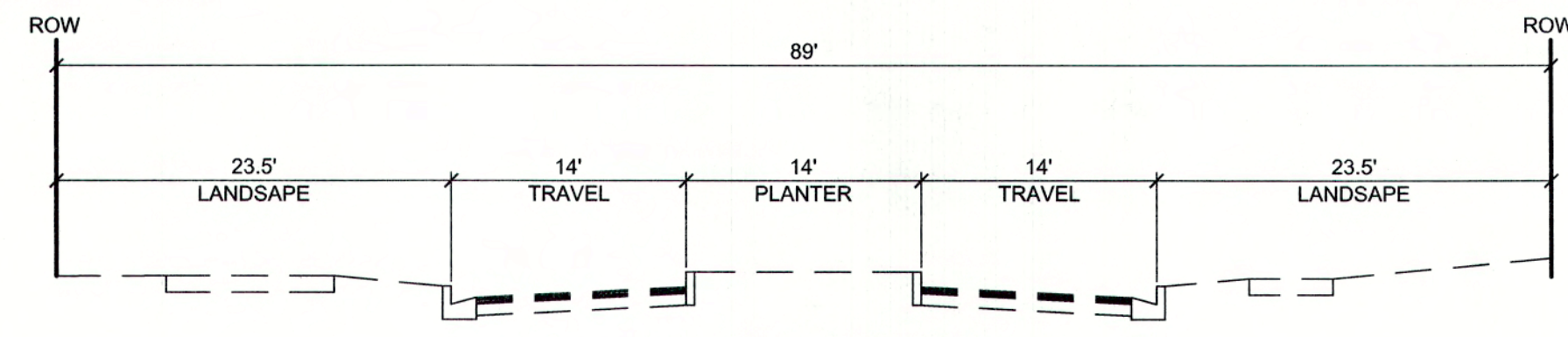
Tubular Steel Fence



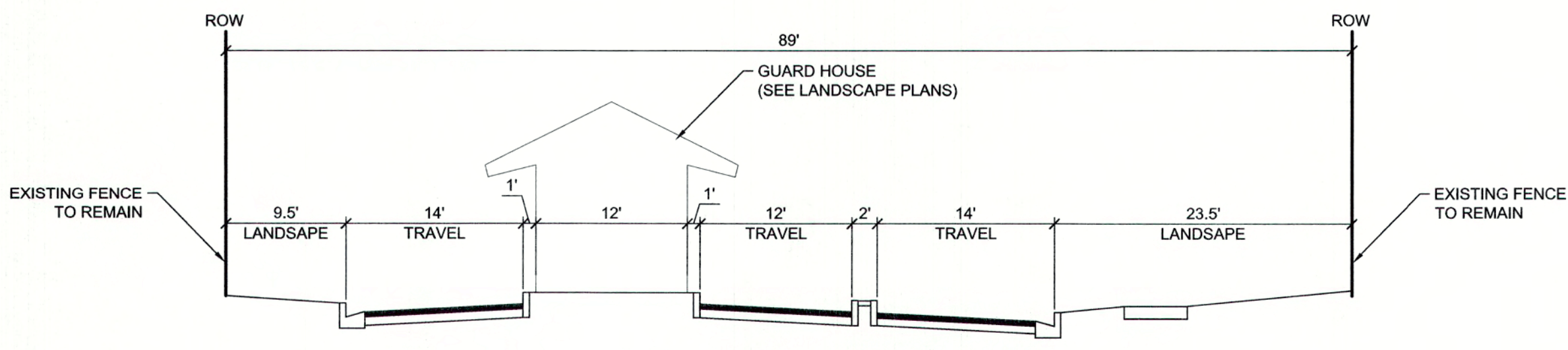
**L0.4**

**Redbridge Entry Drive and Guardhouse**  
**Schematic Gated Entry**

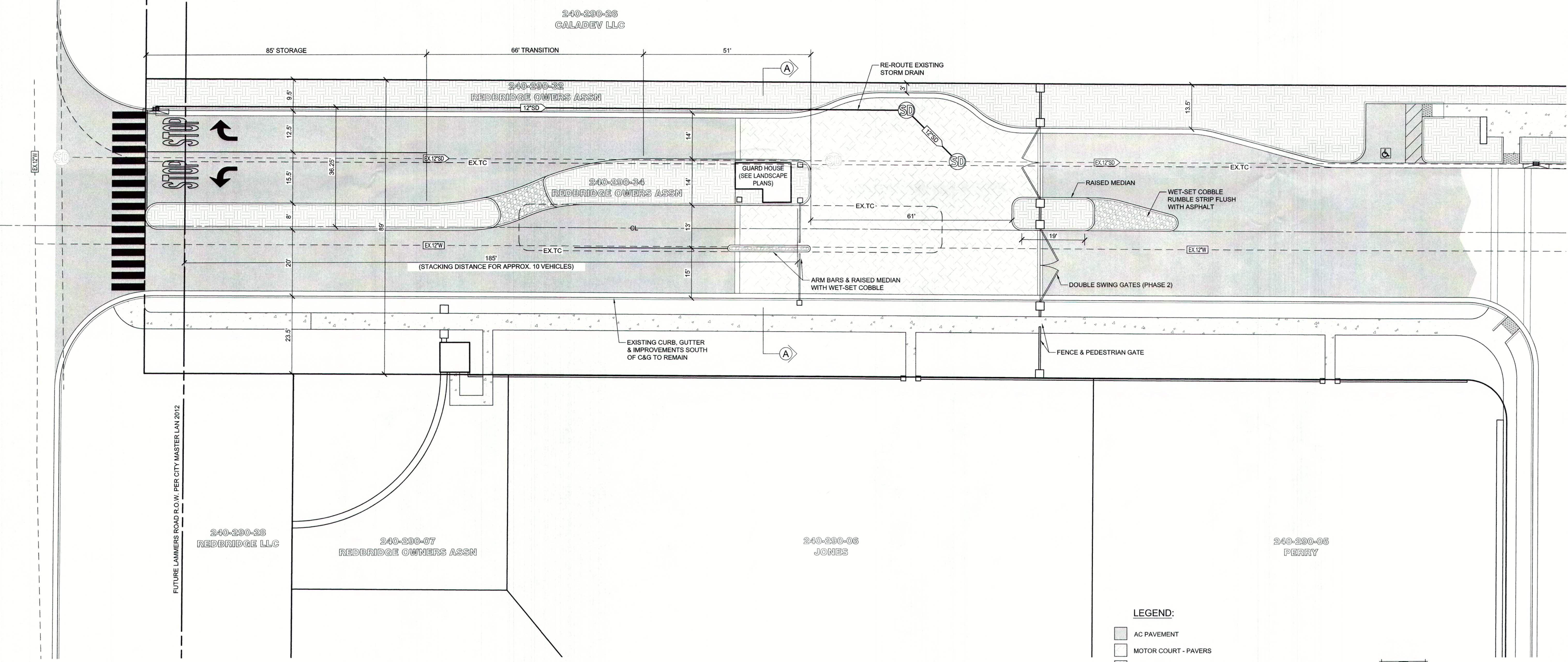




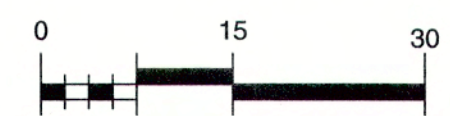
**EXISTING SECTION**  
(NOT TO SCALE)



**PROPOSED SECTION A-A**  
(NOT TO SCALE)



- LEGEND:**
- AC PAVEMENT
  - MOTOR COURT - PAVERS
  - WET-SET COBBLE
  - LANDSCAPING - SEE LANDSCAPE PLANS



**CITY OF TRACY**

THE CITY ENGINEER'S REVIEW IS LIMITED TO THE TECHNICAL ASPECTS OF THE INFORMATION SUBMITTED HEREON. THE CITY ENGINEER SHALL HAVE THE AUTHORITY TO APPROVE OR DISAPPROVE THE INFORMATION SUBMITTED HEREON. APPROVED FOR THE CITY OF TRACY.

DATE: \_\_\_\_\_  
CITY ENGINEER: RULDEEP SHARMA

**MCR ENGINEERING, INC.**  
1242 DUPONT COURT  
MANTACA, CA 95336  
TEL: (209) 239-6229  
FAX: (209) 239-8839  
WWW.MCRENGINEERING.COM

PREPARED UNDER THE DIRECTION OF:  
TONY B. MARSHALL R.C.E. C.0115 ESR 730517 DATE: \_\_\_\_\_  
CITY ENGINEER: RULDEEP SHARMA

NO.	REVISIONS	DATE	APPROVED

JOB NO. 15-052  
DATE 10/09/17  
SCALE AS SHOWN  
DR. BY RFP  
CK. BY TM

**SITE DIMENSION PLAN**

**REDBRIDGE ENTRANCE GATE**  
TRACY, CALIFORNIA

SHEET  
**1**  
OF 1 SHEETS