

NOTICE OF REGULAR MEETING

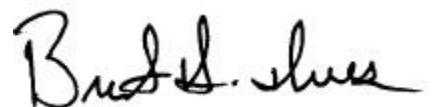
Pursuant to Section 54954.2 of the Government Code of the State of California, a Regular meeting of the **SOUTH COUNTY FIRE AUTHORITY** is hereby called for:

Date/Time: **Tuesday, October 16, 2012, 5:00 p.m.**
(or as soon thereafter as possible)

Location: **Council Chambers**
333 Civic Center Plaza, Tracy

Government Code Section 54954.3 states that every public meeting shall provide an opportunity for the public to address the South County Fire Authority on any item, before or during consideration of the item, however no action shall be taken on any item not on the agenda.

1. Call to Order
2. Roll Call
3. Items from the Audience - *In accordance with Procedures for Preparation, Posting and Distribution of Agendas and the Conduct of Public Meetings, adopted by Resolution 2008-140 any item not on the agenda brought up by the public at a meeting, shall be automatically referred to staff. If staff is not able to resolve the matter satisfactorily, the member of the public may request a Board Member to sponsor the item for discussion at a future meeting.*
4. Approval of Minutes
5. ACCEPT A REPORT ON THE SOUTH COUNTY FIRE AUTHORITY EMERGENCY RESPONSE PERFORMANCE FOR THE FIRST QUARTER OF FISCAL YEAR 2012-2013
6. ACCEPT A REPORT ON THE SOUTH COUNTY FIRE AUTHORITY EMERGENCY RESPONSE PERFORMANCE FOR FISCAL YEAR 2011-2012
7. ACCEPT A PRESENTATION ON THE SOUTH COUNTY FIRE AUTHORITY FISCAL YEAR 2011-2012 ANNUAL REPORT
8. INTENT TO SCHEDULE A SPECIAL JOINT MEETING OF THE CITY COUNCIL AND THE TRACY RURAL FIRE PROTECTION DISTRICT BOARD TO JOINTLY PREPARE A FY 13-14 BUDGET FOR THE SOUTH COUNTY FIRE AUTHORITY
9. Items from the Audience
10. Adjournment



Chairperson

Date Posted: October 11, 2012

The City of Tracy is in compliance with the Americans with Disabilities Act and will make all reasonable accommodations for the disabled to participate in public meetings. Persons requiring assistance or auxiliary aids in order to participate, should call City Hall (209-831-6000), at least 24 hours prior to the meeting.

Any materials distributed to the majority of the South County Fire Authority regarding any item on this agenda will be made available for public inspection in the City Clerk's office located at 333 Civic Center Plaza, Tracy, during normal business hours

July 17, 2012, 5:30 p.m.

Council Chambers, 333 Civic Center Plaza

Web Site: www.ci.tracy.ca.us

1. Call to Order – Chairperson Thoming called the meeting to order at 5:30 p.m.
2. Roll Call – Roll call found Directors Abercrombie, Reece, Rickman and Chairperson Thoming present.
3. Items from the Audience - None.
4. Approval of Minutes – It was moved by Director Abercrombie and seconded by Director Reece to adopt the regular meeting minutes of April 17, 2012. Voice vote found all in favor; passed and so ordered.
5. ACCEPT A REPORT ON THE SOUTH COUNTY FIRE AUTHORITY EMERGENCY RESPONSE PERFORMANCE FOR THE FOURTH QUARTER OF FISCAL YEAR 2011-2012 – Fire Division Chief Steve Hanlon, presented the staff report. There were a total of 1603 incidents in the South County Fire Authority (SCFA) during the fourth quarter of Fiscal Year 2011/2012. This is an increase of 214 incidents compared to the fourth quarter of 2010/2011. The distribution of incidents among the jurisdictions of the SCFA remains consistent where the majority of incidents occurred in the City of Tracy (70%), followed by Tracy Rural Fire District (16%), Mountain House Community Services District (5%), Freeways (4%), and other areas outside of the SCFA (3%).

During the evaluation period the department responded to a total of 34 structure fires and 17 were actual working fires on arrival of fire companies. Thirteen of the working fires involved residential structures, two were portable buildings at schools, and one involved a filter housing unit at the GWF Energy facility (14950 W. Schulte Rd.) The May 29, 2012, filter housing fire was confined to just that structure and the loss was estimated at \$1,000,000.

One of the department's goals is to confine residential structure fires to the room of origin or less 90% of the time. This fiscal year that goal was met 70% of the time in the City, 60% of the time in Tracy Rural Fire District, and 67% of the time in the Mountain House Community Services District.

Since July, 2011, staff has presented response time data to the SCFA Board by each of the four components of response time, "Call Processing," "Turnout Time," "Travel Time," and the "Total Reflex Time." The quarterly report displays the performance for each of these time components by percentage and percentile and compares them to both the desired benchmarks and to the acceptable baselines.

During the fourth quarter of Fiscal Year 2011/2012, the department responded to 55% of all emergency incidents inside of the City of Tracy within the total reflex performance objective of 6.5 minutes. This is an improvement in the City of 4% compared to Fiscal

Year 2010-2011. The 90th percentile for all incidents in the City was 8 minutes and 33 seconds (8:33) meaning 90% of all incidents were responded to within 8:33 or less.

In the fourth quarter of Fiscal Year 2011/2012 the Fire Department responded to 74% of all emergency incidents in the Tracy Rural Fire Protection District within the total reflex performance objective of 10 minutes. This is an improvement of 4% from the previous fiscal year. The 90th percentile for all incidents in the rural area was 11 minutes and 25 seconds; 90% of all incidents were responded to within 11:38 or less.

Response performance in the Mountain House Community Services District was 26% for all emergency incidents within the total reflex performance objective of 6.5 minutes. The 90th percentile for all incidents was 10 minutes and 5 seconds (10:05).

Staff recommended the Board of Directors accept the South County Fire Authority Quarterly Response Performance Report for the fourth quarter of Fiscal Year 2011-2012.

Fire Division Chief Hanlon added normally the Fiscal Year Response Report would be presented at the July meeting. Fire Chief Al Nero will present a new comprehensive report in September, which will include all projects.

Director Thoming stated his disapproval of the call processing times.

It was moved by Director Abercrombie and seconded by Director Reece to accept the South County Fire Authority Quarterly Response Performance Report for the fourth quarter of Fiscal Year 2011-2012. Voice vote found all in favor; passed and so ordered.

6. APPOINTMENT OF SOUTH COUNTY FIRE AUTHORITY BOARD MEMBER TO PARTICIPATE ON THE OVERSIGHT COMMITTEE TO REVIEW THE GOVERNANCE STRUCTURE FOR THE PROVISION OF FIRE SERVICES - At previous Council and Tracy Rural Board meetings, Fire Chief Al Nero presented the proposed process to be used to evaluate the current governance structure of the South County Fire Authority. Included in the process will be an Oversight Committee made up of representatives of the South County Fire Authority, Tracy City Council, Tracy Rural Fire Board, Mountain House Board, labor and community members.

A Task Force, consisting of a facilitator and subject matter experts, will analyze a variety of issues to determine a governance model, i.e., Joint Powers Agreement, Special District, Contract for Services, etc., and provide recommendations to the Oversight Committee for a structure that streamlines the decision making process to efficiently implement fire services within the South County Fire Authority.

Staff recommended that the Board of Directors of the South County Fire Authority appoints a member to participate on the Oversight Committee in reviewing the fire governance structure.

Director Abercrombie asked if any Tracy residents will serve on the Oversight Committee. Fire Chief Nero responded yes and they will be appointed within two weeks.

It was moved by Director Abercrombie and seconded by Director Reece to nominate Director Thoming to serve on the Oversight Committee. Voice vote found all in favor; passed and so ordered.

- 7. Items from the Audience - None
- 8. Adjournment – It was moved by Director Abercrombie and seconded by Director Reece to adjourn. Voice vote found all in favor; passed and so ordered. Time: 5:37 p.m.

The above are summary minutes. The above agenda was posted at Tracy City Hall on July 12, 2012.

Chairperson

Attest:

Secretary

SCFA AGENDA ITEM 5

REQUEST

ACCEPT A REPORT ON THE SOUTH COUNTY FIRE AUTHORITY EMERGENCY RESPONSE PERFORMANCE FOR THE FIRST QUARTER OF FISCAL YEAR 2012-2013

EXECUTIVE SUMMARY

The following report is a summary of emergency response performance for the first quarter of fiscal year 2012/2013. The total number fire department incidents in the South County Fire Authority for the first quarter increased 19% compared to the same quarter in fiscal year 2011/2012. Response performance remains on par and consistent.

DISCUSSION

This report presents historical fire department response information for the first quarter of fiscal year 2012/2013.

There were a total of 1689 incidents in the South County Fire Authority (SCFA) during fiscal year 2012/2013. This is an increase over the first quarter of the last two fiscal years; there were 1420 incidents during the first quarter of fiscal year 2011/2012 and 1389 during the first quarter of 2010/2011.

The number of structure fires was down during the first quarter of this fiscal year. There were six structure fires; all were located inside of the City with the total loss for the quarter at \$96,976.

The Department's exceeded its goal to confine residential structure fires to the room of origin or less 90% of the time. During the quarter that goal was met 100% of the time in the City.

Tracy Rural Fire Protection District had seven vehicle fires totaling \$108,100 in loss. One fire accounted for most of that loss. It was a semi and trailer hauling auto parts that burned near the gas pumps at the 76 gas station on South Chrisman Road on July 26th. That one fire totaled \$75,000 in loss.

During the first quarter of fiscal year 2011/2013, the department responded to 54% of all emergency incidents inside of the City of Tracy within the total reflex performance objective of 6.5 minutes. The 90th percentile for all incidents in the City was 8 minutes and 21 seconds (8:21) meaning 90% of all incidents were responded to within 8:21 or less.

In the first quarter of fiscal year 2011/2013 the fire department responded to 72% of all emergency incidents in the TRFPD within the total reflex performance objective of 10 minutes. The 90th percentile for all incidents in the rural area was 12 minutes and 43 seconds; 90% of all incidents were responded to within 12:43 or less.

Response performance in the Mountain House Community Services District was 41% for all emergency incidents within the total reflex performance objective of 6.5 minutes. The 90th percentile for all incidents was 10 minutes and 07 seconds (10:07).

FISCAL IMPACT

There is no fiscal impact related to receiving this report

RECOMMENDATION

Staff recommends the Board of Directors accept the South County Fire Authority Response Performance Report for the first quarter of fiscal year 2012/2013.

Prepared by: Steve Hanlon, Fire Division Chief

Reviewed by: Alford Nero, Fire Chief

Approved by: Leon Churchill, Jr., Executive Director

Attachment: South County Fire Authority Quarterly Response Performance Report



South County Fire Authority Quarterly Response Performance Report

First Quarter - Fiscal Year 2012/2013 (July 1, 2012 through September 30, 2012)

This report reflects incident responses for all jurisdictions of the South County Fire Authority during the first quarter of Fiscal Year 2012/2013. It includes fire department response for the City of Tracy, the Tracy Rural Fire Protection District, and the town of Mountain House.

Tables and charts display the numbers of incidents occurring in each jurisdiction of the South County Fire Authority, responses per company, the total number of incident for the past year, response performance, and a summary of the major fires that have occurred during the first quarter of Fiscal Year 2012/2013.

Incidents by Type – First Quarter FY 2012/2013

The following table displays the percentage of incident types dispatched in each jurisdiction of the South County Fire Authority during the first quarter of Fiscal Year 2012/2013.

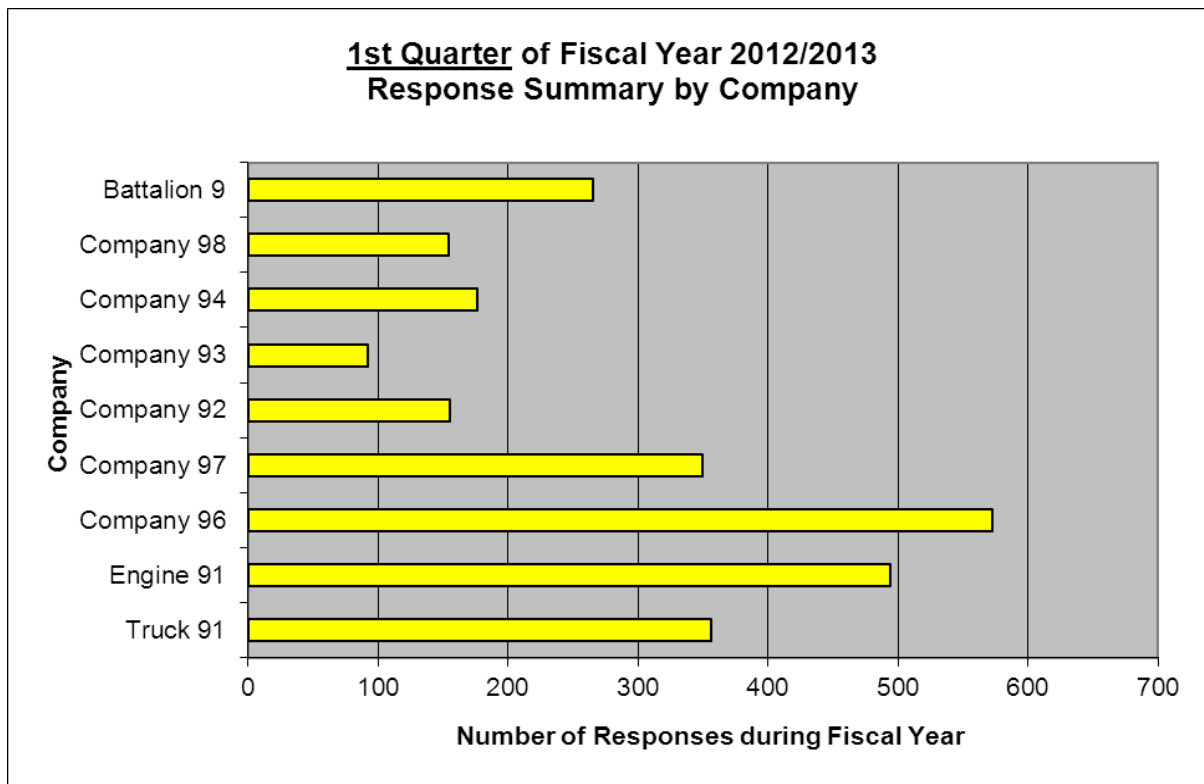
<u>Call Type</u>	<u>City</u>	<u>Rural</u>	<u>Mt. House</u>	<u>Freeway</u>	<u>Other</u>	<u>TOTALS</u>
Fires	6.8%	20.2%	9%	30%	27%	11%
EMS/Rescue	76.7%	59.1%	73%	61%	68%	72%
Hazardous Condition	2.9%	7.4%	3%	6%	3%	4%
Service	4.7%	4.5%	6%	2%	1%	4%
Alarm	8.5%	7.9%	9%	0%	1%	8%
Other	0.3%	0.8%	0%	2%	0%	0%
TOTALS	1162	242	88	104	93	1689
Percentage of Total	69%	14%	5%	6%	6%	

Responses by Company of the South County Fire Authority

This table shows the number of responses that each fire unit was attached to during the first quarter of Fiscal Year 2012/2013. These responses incorporate multiple units that have responded to a single incident.

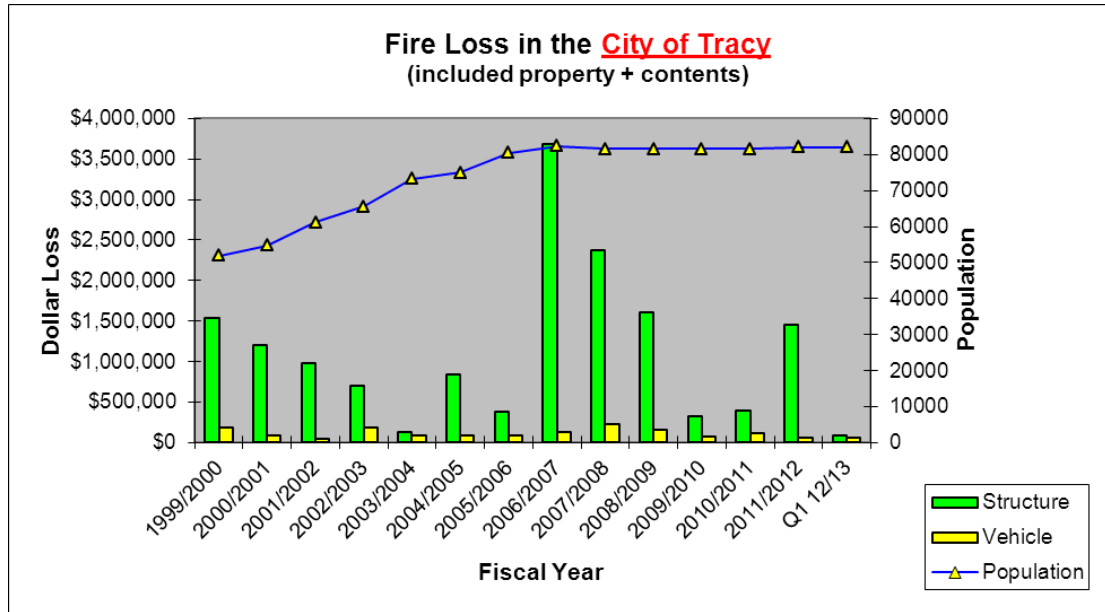
Company	City	Rural	Mt. House	Freeway	Other	TOTALS
Truck 91	248	52	7	44	5	356
Engine 91	418	39	5	29	3	494
Company 96	440	62	16	43	12	573
Company 97	287	37	3	21	2	350
Company 92	45	63	0	17	30	155
Company 93	10	49	0	22	11	92
Company 94	34	50	15	36	41	176
Company 98	14	30	81	17	12	154
Battalion 9	104	74	13	58	16	265
TOTALS	1600	456	140	287	132	2615
Percentage of Total	61%	17%	5%	11%	5%	100%

The chart below displays the number of responses per company during the first quarter of Fiscal Year 2012/2013. The data for this bar chart is from the table above.

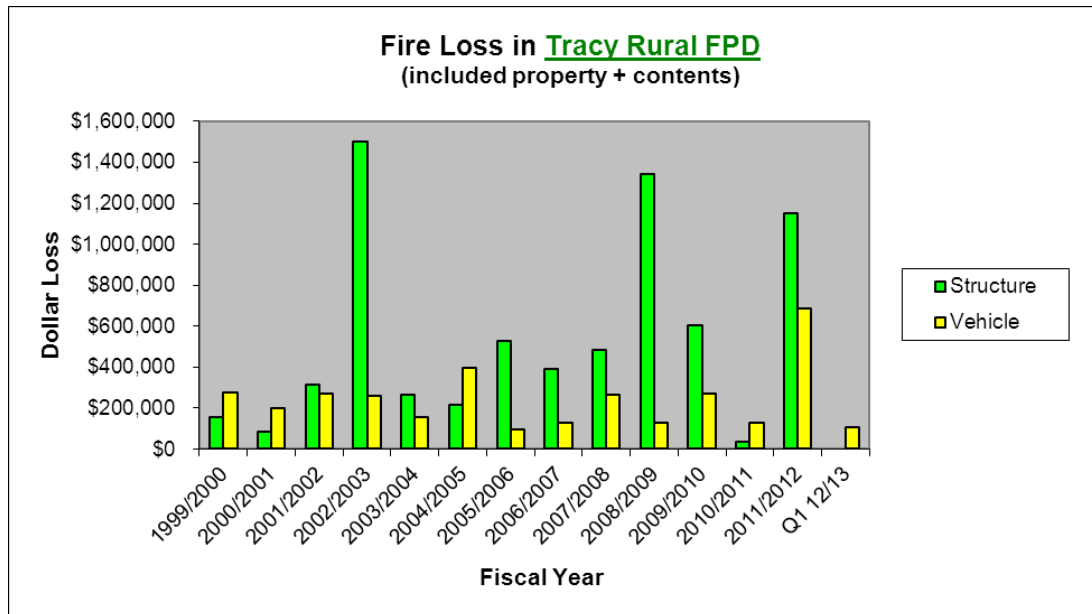


Structure Fire Loss

During the first quarter of Fiscal Year 2012/2013 the Fire Department was dispatched to twenty-two structure fires in the City of Tracy. Six turned out to be actual fires on arrival of the fire department. The most significant was to an unoccupied single family dwelling at 435 W. Beverly Place on 9/9/12.



The Fire Department was dispatched to four structure fires in the Tracy Rural Fire Protection District during the first quarter of Fiscal Year 2012/2013. None of these four fires were actual fires upon arrival of the fire department. A vehicle fire at the 76 Gas Station on S. Chrisman Rd. on 7/26/12 destroyed a freightliner cab, the stake side trailer, and its contents which were new auto parts and lubricants. That loss was estimated at \$75,000.



Structure Loss

The following table lists the most significant dollar loss fires that occurred during the first quarter of Fiscal Year 2012/2013. This list includes only fires with over \$10,000 in combined property and content loss.

City of Tracy Structure Fire Loss

Tracy Rural FPD Structure Fire Loss

Date	Address	Dollar Loss		Date	Address	Dollar Loss
9/9/2012	435 W. Beverly Pl.	\$75,000			No fires over \$10K in loss during Q1	

MHCS D Structure Fire Loss

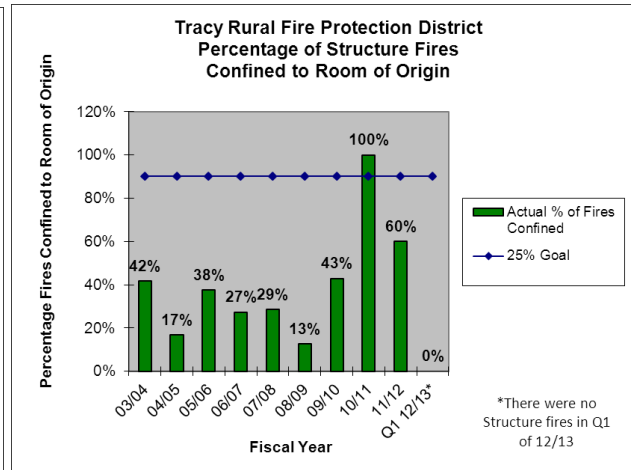
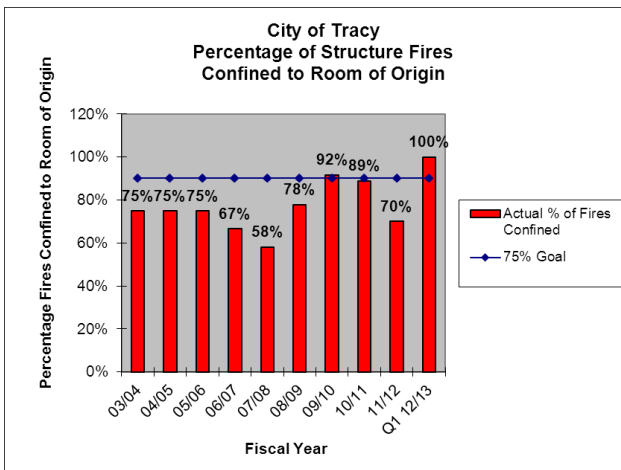
Date	Address	Dollar Loss
	No fires over \$10K in loss during Q1	

“Moderate Risk” Structure Fires Confined to Room of Origin

The majority of structure fires in the South County Fire Authority occur in residential structures. When an effective response force can be assembled to safely mitigate these types of fires, the outcome is usually positive. The following are the South County Fire Authority Moderate risk structure fire objectives:

- To confine “moderate risk” structure fires to the room of origin or less 90% of the time in the City.
- To confine “moderate risk” structure fires to the room of origin or less 90% of the time in the District.

The following charts display the percentage of moderate risk structure fires confined to the room of origin or less since Fiscal Year 2003/2004.



Queuing

Queuing is a term used to describe the occurrence of simultaneous calls in one fire company's first-due area. When simultaneous calls are dispatched in one company's first-due area, a response from another company is required. This pulls resources from another area thus creating a void in the service delivery system and potentially creating a delay in response. A certain level of queuing is anticipated for fire department units relative to a static response system.

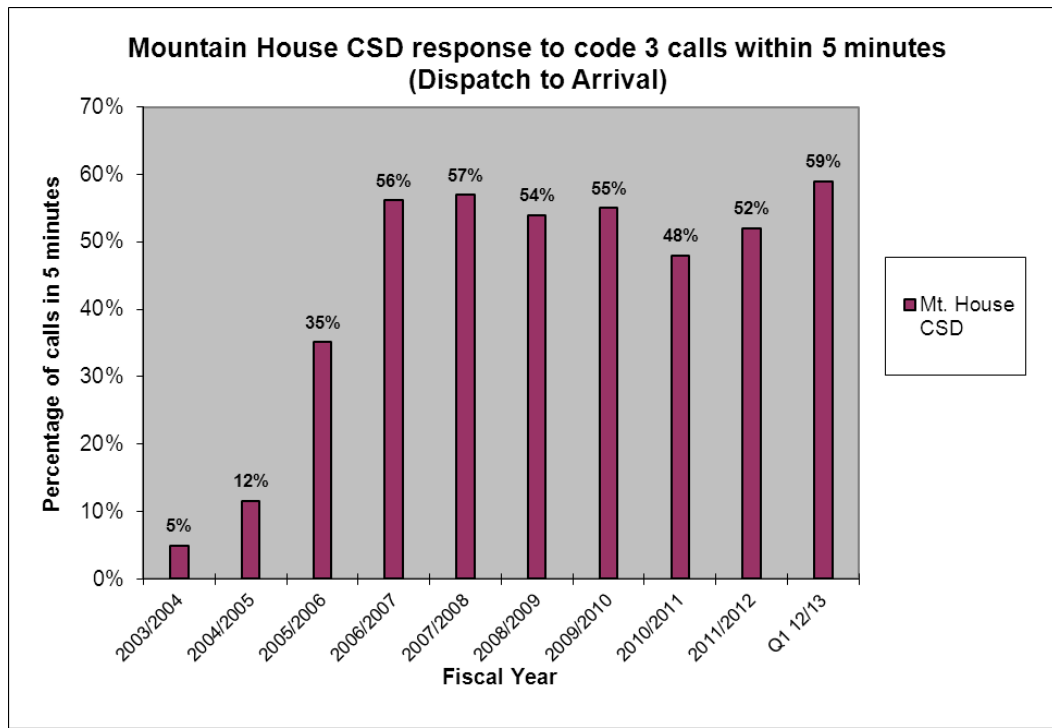
The following table displays the queuing percentages in each fire station's response area since Fiscal Year 2006/2007.

South County Fire Authority Queuing

Station Response Area	% of incidents handled by non-first due 2006/2007 (from SOC report)	% of incidents handled by non-first due FY 2008/2009	% of incidents handled by non-first due FY 2009/2010	% of incidents handled by non-first due FY 2010/2011	% of incidents handled by non-first due FY 2011/2012	% of incidents handled by non-first due Q-1 FY 2012/2013
91	17%	8%	8%	5%	4%	4%
92	9%	10%	8%	3%	3%	2%
93	6%	6%	3%	2%	2%	0%
94	14%	15%	9%	4%	3%	2%
96	11%	10%	8%	7%	6%	6%
97	10%	9%	6%	6%	5%	3%
98	13%	5%	3%	3%	3%	2%

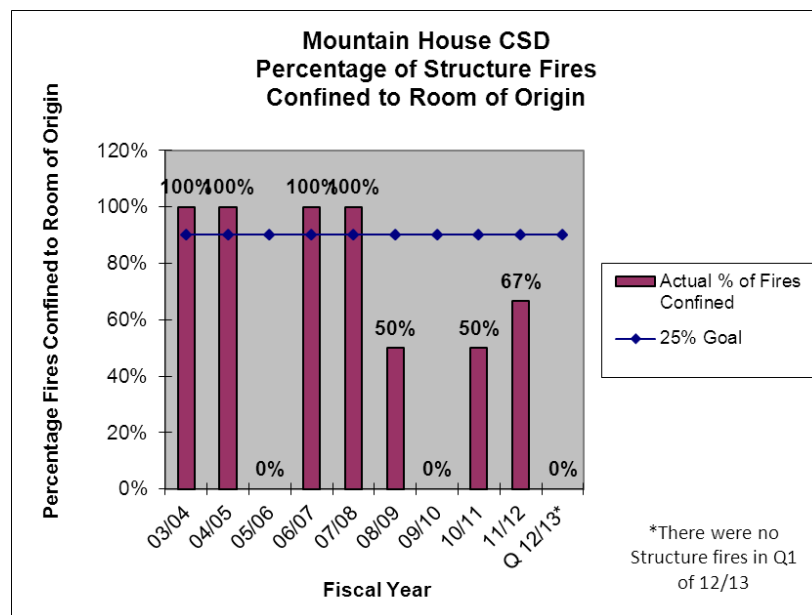
Mountain House Community Services District Response Performance

The charts below display the Mountain House Community Services District response performance and the percentage of “moderate risk structure fires confined to the room of origin or less since the 2003/2004 Fiscal Year.



“Moderate Risk” Structure Fires Confined to Room of Origin

The Department was dispatched to two structure fires in the Mountain House Community Services District during the first quarter of Fiscal Year 2012/2013. None turned out to be fires that required control actions by firefighters.



Components of Response Time

The tables on the following pages display each of the components of response time for the first quarter of fiscal year 2012/2013 and for fiscal year 2011/2012. The components of response time are “call processing,” “turnout time,” “travel time,” and the sum of the three, “total reflex time.”

There are two sets of tables for the City and two sets for the Tracy Rural Fire Protection District. The two tables above the center line display how the fire department has performed during the past quarter compared to the “benchmark” and the “baseline.” The two tables below the center line display the “benchmark” and the “baseline” for fiscal year 2011/2012.

Benchmarks are the desired level of service.

Baselines are the lower end of the acceptable best practices range (established by the Commission on Fire Accreditation International).

90th percentile time means that for a set of values at least ninety percent (90%) of them are less than or equal to the time displayed.

City of Tracy Response Performance - First Quarter FY 2012/2012 and FY 11/12

SCFA Existing Response Performance Objectives (BENCHMARKS)

City of Tracy - First Quarter Fiscal Year 2012/2013

EMS Incidents		90th Percentile	Structure Fire Incidents		90th Percentile	All Incident Types		90th Percentile
Call Processing	16% @ 1:00	3:20	Call Processing	40% @ 1:00	1:56	Call Processing	18% @ 1:00	2:54
Turnout Time	48% @ 1:00	1:37	Turnout Time	20% @ 1:00	1:55	Turnout Time	72% @ 1:00	1:47
Travel Time	79% @ 4:00	4:45	Travel Time	100% @ 4:00	3:02	Travel Time	76% @ 4:00	4:58
Total Reflex Time	56% @ 6:00	8:07	Total Reflex Time	100% @ 6:00	6:53	Total Reflex Time	54% @ 6:00	8:21

SCFA Existing Response Performance Objectives (Urban BASELINES from CFAI)

City of Tracy - First Quarter Fiscal Year 2012/2013

EMS Incidents		90th Percentile	Structure Fire Incidents		90th Percentile	All Incident Types		90th Percentile
Call Processing	38% @ 1:30	3:20	Call Processing	80% @ 1:30	1:56	Call Processing	40% @ 1:30	2:54
Turnout Time	85% @ 1:30	1:37	Turnout Time	80% @ 1:30	1:55	Turnout Time	95% @ 1:30	1:47
Travel Time	93% @ 5:12	4:45	Travel Time	100% @ 5:12	3:02	Travel Time	92% @ 5:12	4:58
Total Reflex Time	91% @ 8:12	8:07	Total Reflex Time	100% @ 8:12	6:53	Total Reflex Time	90% @ 8:12	8:21

SCFA Existing Response Performance Objectives (BENCHMARKS)

City of Tracy - Fiscal Year 2011/2012

EMS Incidents		90th Percentile	Structure Fire Incidents		90th Percentile	All Incident Types		90th Percentile
Call Processing	15% @ 1:00	3:41	Call Processing	38% @ 1:00	2:02	Call Processing	13% @ 1:00	3:14
Turnout Time	45% @ 1:00	1:50	Turnout Time	24% @ 1:00	2:34	Turnout Time	67% @ 1:00	1:54
Travel Time	82% @ 4:00	4:41	Travel Time	81% @ 4:00	5:19	Travel Time	79% @ 4:00	4:52
Total Reflex Time	53% @ 6:00	8:18	Total Reflex Time	62% @ 6:00	7:14	Total Reflex Time	52% @ 6:00	8:36

SCFA Existing Response Performance Objectives (Urban BASELINES from CFAI)

City of Tracy - Fiscal Year 2011/2012

EMS Incidents		90th Percentile	Structure Fire Incidents		90th Percentile	All Incident Types		90th Percentile
Call Processing	35% @ 1:30	3:41	Call Processing	79% @ 1:30	2:02	Call Processing	34% @ 1:30	3:14
Turnout Time	80% @ 1:30	1:50	Turnout Time	79% @ 1:30	2:34	Turnout Time	92% @ 1:30	1:54
Travel Time	94% @ 5:12	4:41	Travel Time	88% @ 5:12	5:19	Travel Time	92% @ 5:12	4:52
Total Reflex Time	89% @ 8:12	8:18	Total Reflex Time	97% @ 8:12	7:14	Total Reflex Time	88% @ 8:12	8:36

Tracy Rural Fire Protection District Response Performance - First Quarter FY 2012/2013 and FY 11/12

SCFA Existing Response Performance Objectives (BENCHMARKS)								
Tracy Rural Fire Protection District - <u>First Quarter</u> Fiscal Year 2012/2013								
EMS Incidents		90th Percentile	Structure Fire Incidents		90th Percentile	All Incident Types		90th Percentile
Call Processing	16% @ 1:00	3:20	Call Processing	1:00	*	Call Processing	18% @ 1:00	3:17
Turnout Time	31% @ 1:00	2:04	Turnout Time	1:00	*	Turnout Time	56% @ 1:00	2:00
Travel Time	84% @ 7:30	7:56	Travel Time	7:30	*	Travel Time	81% @ 7:30	8:50
Total Reflex Time	74% @ 9:30	12:06	Total Reflex Time	9:30	*	Total Reflex Time	72% @ 9:30	12:43

SCFA Existing Response Performance Objectives (Rural BASELINES from CFAI)								
Tracy Rural Fire Protection District - <u>First Quarter</u> Fiscal Year 2012/2013								
EMS Incidents		90th Percentile	Structure Fire Incidents		90th Percentile	All Incident Types		90th Percentile
Call Processing	44% @ 1:30	3:20	Call Processing	1:30	*	Call Processing	48% @ 1:30	3:17
Turnout Time	70% @ 1:30	2:04	Turnout Time	1:30	*	Turnout Time	86% @ 1:30	2:00
Travel Time	100% @ 13:00	7:56	Travel Time	13:00	*	Travel Time	99% @ 13:00	8:50
Total Reflex Time	99% @ 16:00	12:06	Total Reflex Time	16:00	*	Total Reflex Time	99% @ 16:00	12:43

*there were no structure fires in the Tracy Rural Fire Protection District during the first quarter of FY 12/13

SCFA Existing Response Performance Objectives (BENCHMARKS)								
Tracy Rural Fire Protection District - Fiscal Year 2011/2012								
EMS Incidents		90th Percentile	Structure Fire Incidents		90th Percentile	All Incident Types		90th Percentile
Call Processing	15% @ 1:00	3:41	Call Processing	38% @ 1:00	2:16	Call Processing	16% @ 1:00	3:35
Turnout Time	35% @ 1:00	1:59	Turnout Time	13% @ 1:00	2:34	Turnout Time	58% @ 1:00	2:03
Travel Time	85% @ 7:30	8:25	Travel Time	88% @ 7:30	6:51	Travel Time	84% @ 7:30	8:39
Total Reflex Time	67% @ 9:30	12:02	Total Reflex Time	75% @ 9:30	11:33	Total Reflex Time	67% @ 9:30	12:20

SCFA Existing Response Performance Objectives (Rural BASELINES from CFAI)								
Tracy Rural Fire Protection District - Fiscal Year 2011/2012								
EMS Incidents		90th Percentile	Structure Fire Incidents		90th Percentile	All Incident Types		90th Percentile
Call Processing	35% @ 1:30	3:41	Call Processing	50% @ 1:30	2:16	Call Processing	40% @ 1:30	3:35
Turnout Time	74% @ 1:30	1:59	Turnout Time	50% @ 1:30	2:34	Turnout Time	89% @ 1:30	2:03
Travel Time	97% @ 13:00	8:25	Travel Time	100% @ 13:00	6:51	Travel Time	97% @ 13:00	8:39
Total Reflex Time	96% @ 16:00	12:02	Total Reflex Time	100% @ 16:00	11:33	Total Reflex Time	96% @ 16:00	12:20

Mountain House Community Services District Response Performance - First Quarter FY 2012/2013 and FY 11/12

SCFA Existing Response Performance Objectives (BENCHMARKS)								
Mt. House CSD - <u>First Quarter</u> Fiscal Year 2012/2013								
EMS Incidents		90th Percentile	Structure Fire Incidents		90th Percentile	All Incident Types		90th Percentile
Call Processing	13% @ 1:00	3:33	Call Processing	1:00	*	Call Processing	10% @ 1:00	3:33
Turnout Time	52% @ 1:00	1:35	Turnout Time	1:00	*	Turnout Time	73% @ 1:00	1:45
Travel Time	67% @ 4:00	5:33	Travel Time	4:00	*	Travel Time	60% @ 4:00	5:36
Total Reflex Time	44% @ 6:00	10:43	Total Reflex Time	6:00	*	Total Reflex Time	41% @ 6:00	10:07

SCFA Existing Response Performance Objectives (Urban BASELINES from CFAI)								
Mt. House CSD - <u>First Quarter</u> Fiscal Year 2012/2013								
EMS Incidents		90th Percentile	Structure Fire Incidents		90th Percentile	All Incident Types		90th Percentile
Call Processing	38% @ 1:30	3:33	Call Processing	1:30	*	Call Processing	39% @ 1:30	3:33
Turnout Time	83% @ 1:30	1:35	Turnout Time	1:30	*	Turnout Time	95% @ 1:30	1:45
Travel Time	92% @ 5:12	5:33	Travel Time	5:12	*	Travel Time	89% @ 5:12	5:36
Total Reflex Time	81% @ 8:12	10:43	Total Reflex Time	8:12	*	Total Reflex Time	79% @ 8:12	10:07

*there were no structure fires in the Mountain House Community Services District during the first quarter of FY 12/13

SCFA Existing Response Performance Objectives (BENCHMARKS)								
Mt. House CSD - Fiscal Year 2011/2012								
EMS Incidents		90th Percentile	Structure Fire Incidents		90th Percentile	All Incident Types		90th Percentile
Call Processing	8% @ 1:00	3:20	Call Processing	33% @ 1:00	1:27	Call Processing	11% @ 1:00	3:08
Turnout Time	36% @ 1:00	1:38	Turnout Time	67% @ 1:00	1:34	Turnout Time	67% @ 1:00	1:44
Travel Time	58% @ 4:00	5:38	Travel Time	40% @ 4:00	4:25	Travel Time	57% @ 4:00	5:50
Total Reflex Time	30% @ 6:00	9:42	Total Reflex Time	17% @ 6:00	7:25	Total Reflex Time	28% @ 6:00	9:49

SCFA Existing Response Performance Objectives (Urban BASELINES from CFAI)								
Mt. House CSD - Fiscal Year 2011/2012								
EMS Incidents		90th Percentile	Structure Fire Incidents		90th Percentile	All Incident Types		90th Percentile
Call Processing	24% @ 1:30	3:20	Call Processing	83% @ 1:30	1:27	Call Processing	29% @ 1:30	3:08
Turnout Time	83% @ 1:30	1:38	Turnout Time	100% @ 1:30	1:34	Turnout Time	96% @ 1:30	1:44
Travel Time	86% @ 5:12	5:38	Travel Time	80% @ 5:12	4:25	Travel Time	85% @ 5:12	5:50
Total Reflex Time	74% @ 8:12	9:42	Total Reflex Time	83% @ 8:12	7:25	Total Reflex Time	76% @ 8:12	9:49

SCFA AGENDA ITEM 6

REQUEST

**ACCEPT A REPORT ON THE SOUTH COUNTY FIRE AUTHORITY EMERGENCY
RESPONSE PERFORMANCE FOR FISCAL YEAR 2011-2012**

EXECUTIVE SUMMARY

The following report is a summary of emergency response performance for fiscal year 2011/2012 relative to established performance objectives. The total number fire department incidents in the South County Fire Authority increased in fiscal year 2011/2012 by 7% after a four year downward trend. Response performance remains on par and fairly consistent.

DISCUSSION

This report presents historical fire department response information for the fiscal year 2011/2012.

There were a total of 5,951 incidents in the South County Fire Authority (SCFA) during fiscal year 2011/2012. This is an increase of 381 incidents compared to fiscal year 2010/2011. The distribution of incidents among the jurisdictions of the SCFA remains consistent where the majority of incidents occurred in the City of Tracy (71%), followed by Tracy Rural Fire District (15%), Mountain House Community Services District (6%), Freeways (5%), and other areas outside of the SCFA (4%). Of the 5,951 incidents many were multi-company responses requiring more than one fire unit.

There were 9,327 total responses by South County Fire Authority companies. Company 96, located at 301 W. Grantline Rd., continues to be our busiest in total responses.

During the fiscal year, the department was dispatched to a total of 123 structure fires, 19 were out on arrival, 42 required fire department actions to extinguish. Fiscal year 2011/2012 structure fire loss was up 18% in the City and 59% in the Rural area when compared to the last five year average. The significant increase in the Rural area is attributed to the filter housing fire at GWF Energy facility on May 29, 2012 (14950 W. Schulte Rd.) where the loss was estimated to be \$1,000,000.

One of the department's goals is to confine residential structure fires to the room of origin or less 90% of the time. This fiscal year that goal was met 70% of the time in the City, 60% of the Tracy Rural Fire District, and 67% of the time in the Mountain House Community Services District. Another goal of the department is to respond to all emergencies quickly.

The South County Fire Authority response time performance is broken down into four components of response time, "Call Processing," "Turnout Time," "Travel Time," and the "Total Reflex Time." The Response Performance Report displays each of these time components of time by percentage and percentile and compares them to both the desired benchmarks and to the acceptable baselines.

During fiscal year 2011/2012, the department responded to 52% of all emergency incidents inside of the City of Tracy within the total reflex performance objective of 6.5 minutes. This is a 1% improvement in the City compared to fiscal year 2010/2011. The 90th percentile for all incidents in the City was 8 minutes and 36 seconds (8:36) meaning 90% of all incidents were responded to within 8:36 or less.

In fiscal year 2011/2012 the fire department responded to 67% of all emergency incidents in the TRFPD within the total reflex performance objective of 10 minutes. This is 3% less than previous fiscal year. The 90th percentile for all incidents in the rural area was 12 minutes and 20 seconds; 90% of all incidents were responded to within 12:20 or less.

Response performance in the Mountain House Community Services District was 28% for all emergency incidents within the total reflex performance objective of 6.5 minutes. The 90th percentile for all incidents was 9 minutes and 49 seconds (9:49).

FISCAL IMPACT

There is no fiscal impact related to receiving this report

RECOMMENDATION

Staff recommends the Board of Directors accept the South County Fire Authority Response Performance Report for fiscal year 2011/2012.

Prepared by: Steve Hanlon, Fire Division Chief

Reviewed by: Al Nero, Fire Chief

Approved by: Leon Churchill, Jr., Executive Director

Attachment: South County Fire Authority Quarterly Response Performance Report



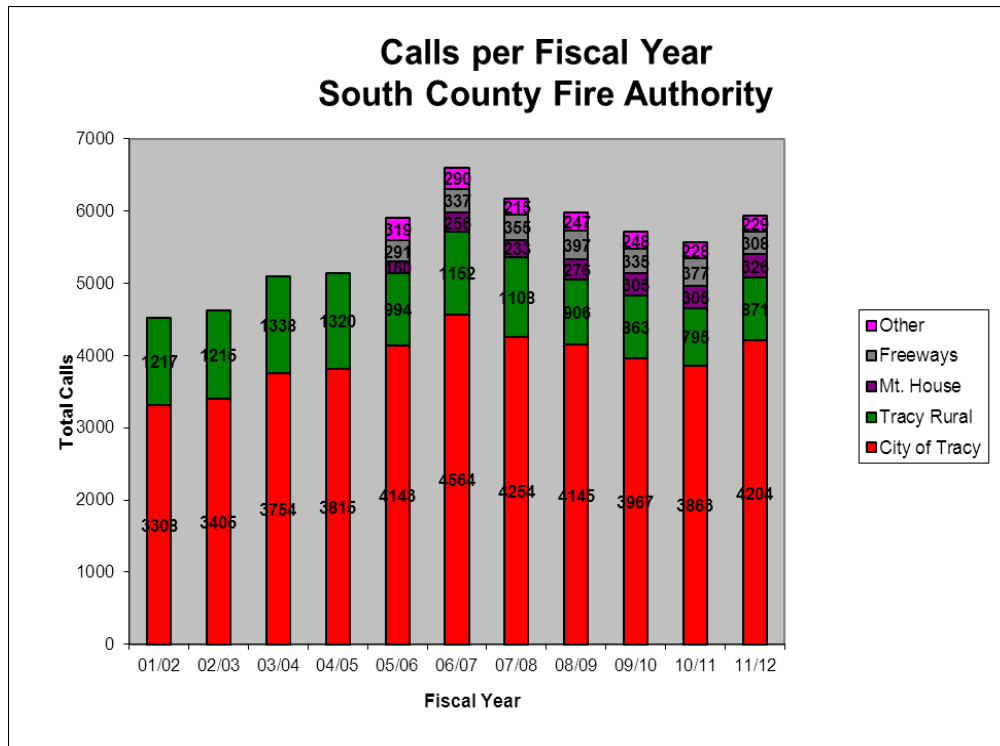
South County Fire Authority Annual Response Performance Report



Fiscal Year 2011/2012
(July 1, 2011 through June 30, 2012)

This report reflects incident responses for all jurisdictions of the South County Fire Authority during Fiscal Year 2011/2012. It includes fire department response for the City of Tracy, the Tracy Rural Fire Protection District, and the town of Mountain House.

Tables and charts display the numbers of incidents, responses per company, response performance, and a summary of the major fires that have occurred during Fiscal Year 2011/2012.



The following table displays the percentage of incident types dispatched in each jurisdiction of the South County Fire Authority during Fiscal Year 2011/2012.

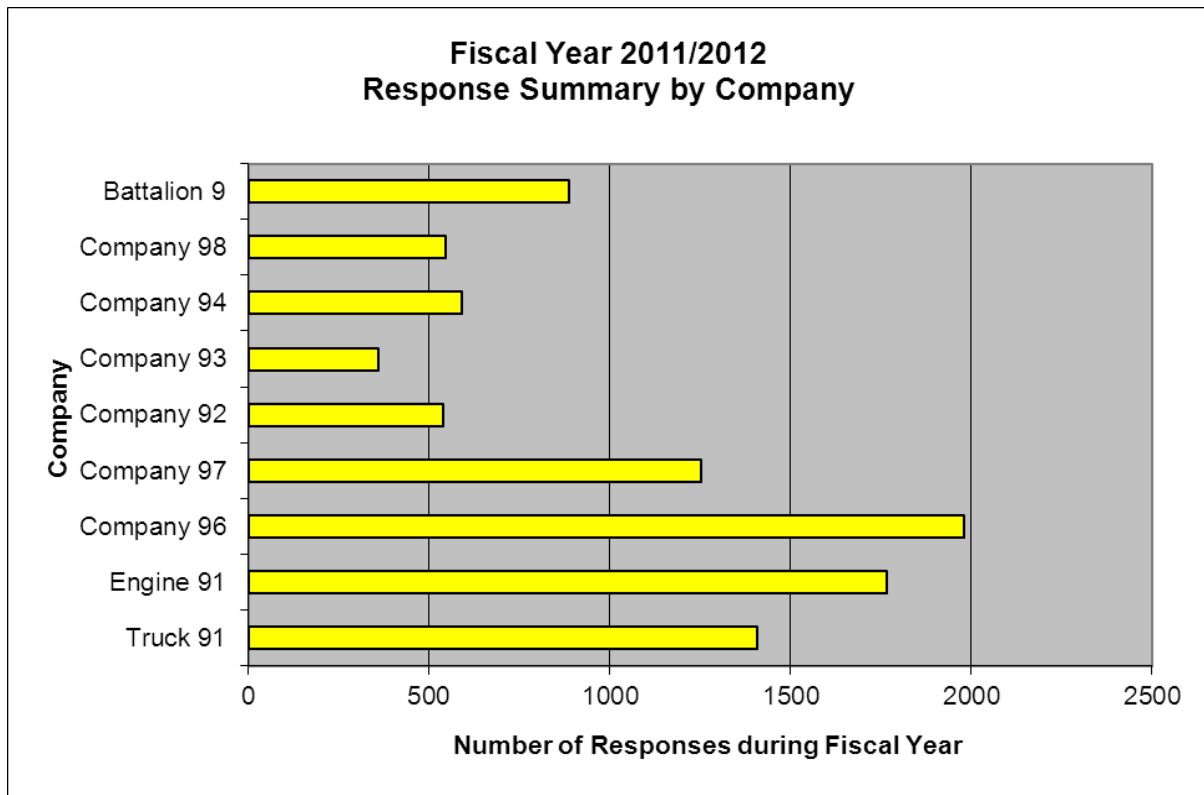
Call Type	City	Rural	Mt. House	Freeway	Other	TOTALS
Fires	5.0%	19.5%	7%	24%	28%	9%
EMS/Rescue	78.2%	64.0%	73%	66%	67%	75%
Hazardous Condition	2.5%	5.2%	5%	5%	3%	3%
Service	4.1%	4.5%	7%	3%	1%	4%
Alarm	10.1%	6.7%	8%	0%	2%	9%
Other	0.0%	0.1%	0%	2%	0%	0%
TOTALS	4204	886	328	288	245	5951
Percentage of Total	71%	15%	6%	5%	4%	

Responses by Company in the South County Fire Authority

This table shows the number of responses that each fire unit was attached to during Fiscal Year 2011/2012. These responses incorporate multiple units that have responded to a single incident.

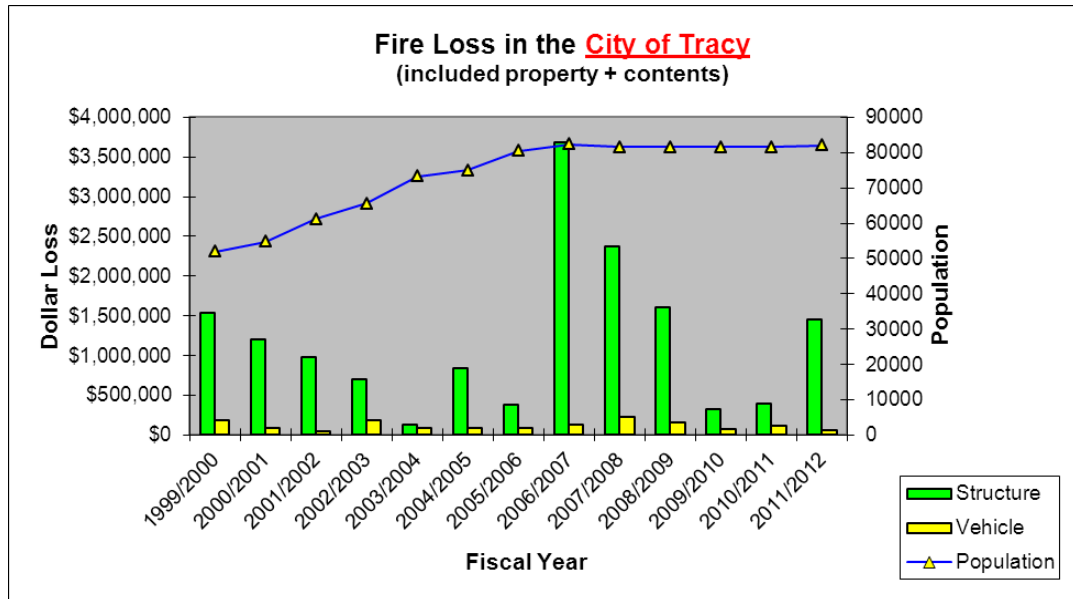
Company	City	Rural	Mt. House	Freeway	Other	TOTALS
Truck 91	994	206	29	150	28	1407
Engine 91	1481	147	38	81	20	1767
Company 96	1612	171	17	145	34	1979
Company 97	989	183	1	75	5	1253
Company 92	176	229	2	84	48	539
Company 93	40	216	0	69	34	359
Company 94	146	202	36	88	117	589
Company 98	78	83	304	38	43	546
Battalion 9	360	277	34	190	27	888
TOTALS	5876	1714	461	920	356	9327
Percentage of Total	63%	18%	5%	10%	4%	100%

The chart below displays the number of responses per company during Fiscal Year 2011/2012. The data for this bar chart is from the table above.



Structure Fire Loss – City of Tracy

During Fiscal Year 2011/2012 the Fire Department was dispatched to eighty-eight structure fires in the City of Tracy. Thirty-two turned out to be actual fires on arrival of the fire department. A civilian injury fire was the most significant; a flammable liquids explosion burned three young adults. The majority of the structure fires in the City occurred at residential, moderate risk occupancies. The two fires in that occurred in commercial occupancies were contained by automatic fire sprinklers until the arrival of the fire department (West Valley Bowl and the Sprint Store – 2613 Naglee). Structure fire loss in the City of Tracy was up 18% compared the past five year average loss.



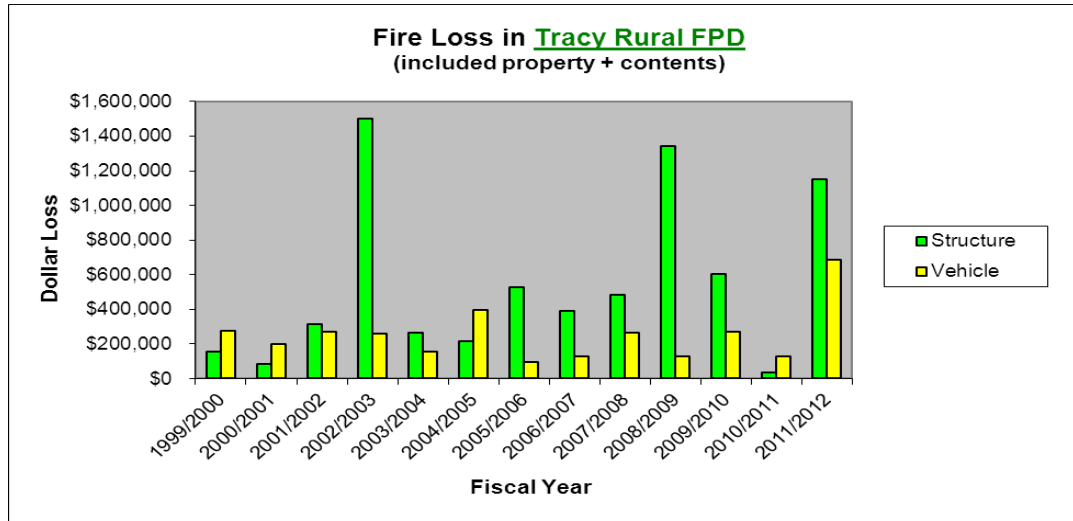
High Value Structure Fire Loss – City of Tracy

The following table lists the most significant dollar loss fires that occurred in the City of Tracy during Fiscal Year 2011/2012. This list includes only fires with over \$10,000 in combined property and content loss.

Date	Address	Dollar Loss
8/6/2011	924 Wall St.	\$33,771
8/24/2011	2613 Naglee Rd.	\$20,000
9/29/2011	301 Falcon Ct.	\$160,000
12/4/2011	22 E. 22nd St.	\$150,000
12/12/2011	883 Twin Oaks Dr.	\$125,000
2/16/2012	1320 Whispering Wind Dr.	\$118,000
2/17/2012	1441 Parker Ave.	\$15,850
2/23/2012	1464 Yorkshire Loop	\$13,000
2/23/2012	223 Berverdore Ave.	\$145,000
3/1/2012	864 S. Gotland Ct.	\$20,500
3/28/2012	70 S. Hickory Ave.	\$10,000
5/17/2012	130 E. Kavanagh Ave.	\$175,000
6/16/2012	1451 Birch Dr.	\$70,000
6/19/2012	505 W. Grantline Rd.	\$28,000
6/30/2012	2929 N. Mac Arthur Dr.	\$51,000

Structure Fire Loss – Tracy Rural Fire Protection District

The Fire Department was dispatched to 31 structure fires in the Tracy Rural Fire Protection District during Fiscal Year 2011/2012. Nine of those fires were working fires upon arrival of the fire department. The high structure fire loss in the Tracy Rural Fire Protection District during Fiscal Year 2011/2012 was due to a filter housing fire at the GWF Energy facility on Schulte Rd. (an estimated \$1,000,000 in loss). The cause of that fire was welding. The vehicle loss was high as a result of a \$450,000 tractor fire that occurred on 11/8/11 on Wright Rd. Structure fire loss in the Rural area was up 59% compared the past five year average loss.



High Value Structure Fire Loss – Tracy Rural FPD

The following table lists the most significant dollar loss fires that occurred in the Tracy Rural Fire Protection District during Fiscal Year 2011/2012. This list includes only fires with over \$10,000 in combined property and content loss.

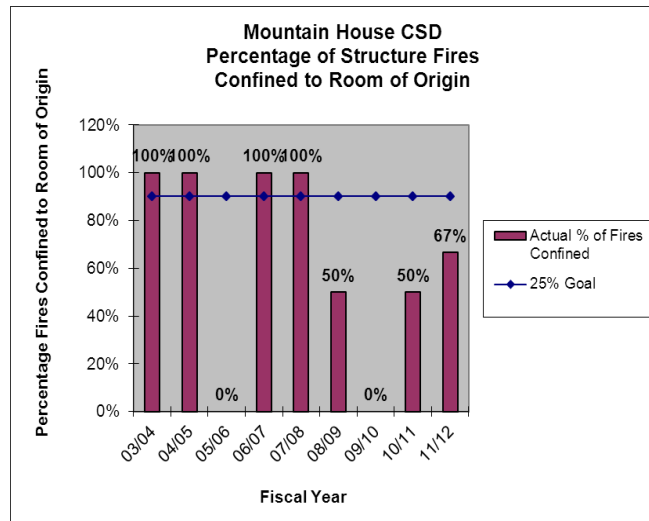
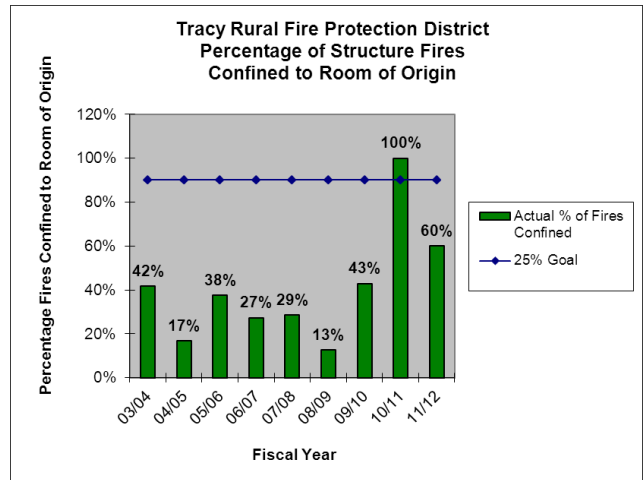
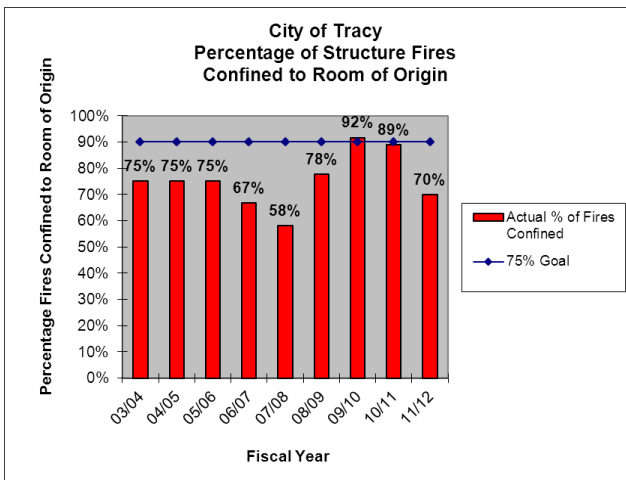
Date	Address	Dollar Loss
8/4/2011	Corral Hollow Rd. and Valpico Rd.	\$75,000
4/22/2012	30000 S. Kasson Rd.	\$65,000
6/21/2012	23363 S. Currier Dr.	\$10,000
5/29/2012	14950 W. Schulte Rd.	\$1,000,000
4/22/2012	30000 S. Kasson Rd.	\$65,000

“Moderate Risk” Structure Fires Confined to Room of Origin

The majority of structure fires in the South County Fire Authority occur in residential structures. When an effective response force can be assembled to safely mitigate these types of fires, the outcome is usually positive. The following are the South County Fire Authority Moderate risk structure fire objectives:

- To confine “moderate risk” structure fires to the room of origin or less 90% of the time in the City.
- To confine “moderate risk” structure fires to the room of origin or less 90% of the time in the District.

The following charts on the following page display the percentage of moderate risk structure fires confined to the room of origin or less since Fiscal Year 2003/2004.



MHCS D Structure Fire Loss

Date	Address	Dollar Loss
12/27/2011	18764 Byron Hwy.	\$211,371
5/22/2012	30 W. Clarrisa Ln.	\$35,000
6/4/2012	508 Faulkner Ct.	\$20,000
6/20/2012	Cupertino Ave.	\$116,000

Queuing

Queuing is a term used to describe the occurrence of simultaneous calls in one fire company's first-due area. When simultaneous calls are dispatched in one company's first-due area, a response from another company is required. This pulls resources from another area thus creating a void in the service delivery system and potentially creating a delay in response. A certain level of queuing is anticipated for fire department units relative to a static response system.

To address queuing increases, an additional engine company was housed at Station 91 on October 30, 2008. The following table displays the queuing percentages in each fire station's response area since Fiscal Year 2006/2007.

South County Fire Authority Queuing

Station Response Area	% of incidents handled by non-first due 2006/2007 (from SOC report)	% of incidents handled by non-first due FY 2008/2009	% of incidents handled by non-first due FY 2009/2010	% of incidents handled by non-first due FY 2010/2011	% of incidents handled by non-first due FY 2011/2012
91	17%	8%	8%	5%	4%
92	9%	10%	8%	3%	3%
93	6%	6%	3%	2%	2%
94	14%	15%	9%	4%	3%
96	11%	10%	8%	7%	6%
97	10%	9%	6%	6%	5%
98	13%	5%	3%	3%	3%

Components of Response Time

The tables on the following pages display each of the components of response time for Fiscal Year 2011/2012 and for Fiscal Year 2010/2011. The components of response time are "call processing," "turnout time," "travel time," and the sum of the three, "total reflex time."

There are two sets of tables on each of the following three pages. Each page displays response time performance data for each of the three jurisdictions, City, Rural and Mountain House. The two tables on the top half of each page displays how the fire department has performed during Fiscal Year 2011/2012 compared to the "benchmark" and the "baseline." The two tables on the lower half of the page displays the "benchmark" and the "baseline" for Fiscal Year 2010/2011.

Benchmarks are the desired level of service.

Baselines are the lower end of the acceptable best practices range (established by the Commission on Fire Accreditation International).

90th percentile time means that for a set of values at least ninety percent (90%) of them are less than or equal to the time displayed.

City of Tracy Response Performance - FY 2011/2012 and FY 2010/2011

SCFA Existing Response Performance Objectives (BENCHMARKS)

City of Tracy - Fiscal Year 2011/2012

EMS Incidents		90th Percentile	Structure Fire Incidents		90th Percentile	All Incident Types		90th Percentile
Call Processing	15% @ 1:00	3:41	Call Processing	38% @ 1:00	2:02	Call Processing	13% @ 1:00	3:14
Turnout Time	45% @ 1:00	1:50	Turnout Time	24% @ 1:00	2:34	Turnout Time	67% @ 1:00	1:54
Travel Time	82% @ 4:00	4:41	Travel Time	81% @ 4:00	5:19	Travel Time	79% @ 4:00	4:52
Total Reflex Time	53% @ 6:00	8:18	Total Reflex Time	62% @ 6:00	7:14	Total Reflex Time	52% @ 6:00	8:36

*******SCFA Existing Response Performance Objectives (Urban BASELINES from CFAI)*******

City of Tracy - Fiscal Year 2011/2012

EMS Incidents		90th Percentile	Structure Fire Incidents		90th Percentile	All Incident Types		90th Percentile
Call Processing	35% @ 1:30	3:41	Call Processing	79% @ 1:30	2:02	Call Processing	34% @ 1:30	3:14
Turnout Time	80% @ 1:30	1:50	Turnout Time	79% @ 1:30	2:34	Turnout Time	92% @ 1:30	1:54
Travel Time	94% @ 5:12	4:41	Travel Time	88% @ 5:12	5:19	Travel Time	92% @ 5:12	4:52
Total Reflex Time	89% @ 8:12	8:18	Total Reflex Time	97% @ 8:12	7:14	Total Reflex Time	88% @ 8:12	8:36

SCFA Existing Response Performance Objectives (BENCHMARKS)

City of Tracy - Fiscal Year 2010/2011

EMS Incidents		90th Percentile	Structure Fire Incidents		90th Percentile	All Incident Types		90th Percentile
Call Processing	10% @ 1:00	3:19	Call Processing	14% @ 1:00	3:16	Call Processing	13% @ 1:00	3:15
Turnout Time	41% @ 1:00	1:49	Turnout Time	19% @ 1:00	2:37	Turnout Time	67% @ 1:00	1:54
Travel Time	82% @ 4:00	4:42	Travel Time	86% @ 4:00	4:31	Travel Time	78% @ 4:00	4:58
Total Reflex Time	52% @ 6:00	8:21	Total Reflex Time	71% @ 6:00	7:38	Total Reflex Time	51% @ 6:00	8:32

*******SCFA Existing Response Performance Objectives (Urban BASELINES from CFAI)*******

City of Tracy - Fiscal Year 2010/2011

EMS Incidents		90th Percentile	Structure Fire Incidents		90th Percentile	All Incident Types		90th Percentile
Call Processing	27% @ 1:30	3:19	Call Processing	38% @ 1:30	3:16	Call Processing	34% @ 1:30	3:15
Turnout Time	79% @ 1:30	1:49	Turnout Time	67% @ 1:30	2:37	Turnout Time	92% @ 1:30	1:54
Travel Time	94% @ 5:12	4:42	Travel Time	96% @ 5:12	4:31	Travel Time	92% @ 5:12	4:58
Total Reflex Time	89% @ 8:12	8:21	Total Reflex Time	96% @ 8:12	7:38	Total Reflex Time	88% @ 8:12	8:32

Tracy Rural Fire Protection District Response Performance - Fourth Quarter FY 2011/2012 and FY 10/11

SCFA Existing Response Performance Objectives (BENCHMARKS)								
Tracy Rural Fire Protection District - Fiscal Year 2011/2012								
EMS Incidents		90th Percentile	Structure Fire Incidents		90th Percentile	All Incident Types		90th Percentile
Call Processing	15% @ 1:00	3:41	Call Processing	38% @ 1:00	2:16	Call Processing	16% @ 1:00	3:35
Turnout Time	35% @ 1:00	1:59	Turnout Time	13% @ 1:00	2:34	Turnout Time	58% @ 1:00	2:03
Travel Time	85% @ 7:30	8:25	Travel Time	88% @ 7:30	6:51	Travel Time	84% @ 7:30	8:39
Total Reflex Time	67% @ 9:30	12:02	Total Reflex Time	75% @ 9:30	11:33	Total Reflex Time	67% @ 9:30	12:20

*****SCFA Existing Response Performance Objectives (Rural BASELINES from CFAI)*****								
Tracy Rural Fire Protection District - Fiscal Year 2011/2012								
EMS Incidents		90th Percentile	Structure Fire Incidents		90th Percentile	All Incident Types		90th Percentile
Call Processing	35% @ 1:30	3:41	Call Processing	50% @ 1:30	2:16	Call Processing	40% @ 1:30	3:35
Turnout Time	74% @ 1:30	1:59	Turnout Time	50% @ 1:30	2:34	Turnout Time	89% @ 1:30	2:03
Travel Time	97% @ 13:00	8:25	Travel Time	100% @ 13:00	6:51	Travel Time	97% @ 13:00	8:39
Total Reflex Time	96% @ 16:00	12:02	Total Reflex Time	100% @ 16:00	11:33	Total Reflex Time	96% @ 16:00	12:20

SCFA Existing Response Performance Objectives (BENCHMARKS)								
Tracy Rural Fire Protection District - Fiscal Year 2010/2011								
EMS Incidents		90th Percentile	Structure Fire Incidents		90th Percentile	All Incident Types		90th Percentile
Call Processing	11% @ 1:00	3:49	Call Processing	43% @ 1:00	2:12	Call Processing	17% @ 1:00	3:36
Turnout Time	44% @ 1:00	1:50	Turnout Time	14% @ 1:00	2:20	Turnout Time	61% @ 1:00	2:00
Travel Time	85% @ 7:30	8:22	Travel Time	100% @ 7:30	6:05	Travel Time	84% @ 7:30	8:22
Total Reflex Time	67% @ 9:30	12:46	Total Reflex Time	100% @ 9:30	9:25	Total Reflex Time	70% @ 9:30	12:31

*****SCFA Existing Response Performance Objectives (Urban BASELINES from CFAI)*****								
Tracy Rural Fire Protection District - Fiscal Year 2010/2011								
EMS Incidents		90th Percentile	Structure Fire Incidents		90th Percentile	All Incident Types		90th Percentile
Call Processing	27% @ 1:30	3:49	Call Processing	57% @ 1:30	2:12	Call Processing	38% @ 1:30	3:36
Turnout Time	78% @ 1:30	1:50	Turnout Time	71% @ 1:30	2:20	Turnout Time	90% @ 1:30	2:00
Travel Time	94% @ 13:00	8:22	Travel Time	100% @ 13:00	6:05	Travel Time	97% @ 13:00	8:22
Total Reflex Time	96% @ 16:00	12:46	Total Reflex Time	100% @ 16:00	9:25	Total Reflex Time	97% @ 16:00	12:31

Mountain House Community Services District Response Performance - Fourth Quarter FY 2011/2012 and FY 10/11

SCFA Existing Response Performance Objectives (BENCHMARKS)

Mt. House CSD - Fiscal Year 2011/2012

EMS Incidents		90th Percentile	Structure Fire Incidents		90th Percentile	All Incident Types		90th Percentile
Call Processing	8% @ 1:00	3:20	Call Processing	33% @ 1:00	1:27	Call Processing	11% @ 1:00	3:08
Turnout Time	36% @ 1:00	1:38	Turnout Time	67% @ 1:00	1:34	Turnout Time	67% @ 1:00	1:44
Travel Time	58% @ 4:00	5:38	Travel Time	40% @ 4:00	4:25	Travel Time	57% @ 4:00	5:50
Total Reflex Time	30% @ 6:00	9:42	Total Reflex Time	17% @ 6:00	7:25	Total Reflex Time	28% @ 6:00	9:49

*****SCFA Existing Response Performance Objectives (Urban BASELINES from CFAI)*****

Mt. House CSD - Fiscal Year 2011/2012

EMS Incidents		90th Percentile	Structure Fire Incidents		90th Percentile	All Incident Types		90th Percentile
Call Processing	24% @ 1:30	3:20	Call Processing	83% @ 1:30	1:27	Call Processing	29% @ 1:30	3:08
Turnout Time	83% @ 1:30	1:38	Turnout Time	100% @ 1:30	1:34	Turnout Time	96% @ 1:30	1:44
Travel Time	86% @ 5:12	5:38	Travel Time	80% @ 5:12	4:25	Travel Time	85% @ 5:12	5:50
Total Reflex Time	74% @ 8:12	9:42	Total Reflex Time	83% @ 8:12	7:25	Total Reflex Time	76% @ 8:12	9:49

SCFA Existing Response Performance Objectives (BENCHMARKS)

Mt. House CSD - Fiscal Year 2010/2011

EMS Incidents		90th Percentile	Structure Fire Incidents		90th Percentile	All Incident Types		90th Percentile
Call Processing	6% @ 1:00	3:19	Call Processing	100% @ 1:00	0:27	Call Processing	11% @ 1:00	3:19
Turnout Time	28% @ 1:00	2:05	Turnout Time	100% @ 1:00	1:14	Turnout Time	56% @ 1:00	2:03
Travel Time	53% @ 4:00	6:16	Travel Time	50% @ 4:00	5:41	Travel Time	57% @ 4:00	6:21
Total Reflex Time	20% @ 6:00	10:08	Total Reflex Time	50% @ 6:00	7:06	Total Reflex Time	26% @ 6:00	10:08

*****SCFA Existing Response Performance Objectives (Urban BASELINES from CFAI)*****

Mt. House CSD - Fiscal Year 2010/2011

EMS Incidents		90th Percentile	Structure Fire Incidents		90th Percentile	All Incident Types		90th Percentile
Call Processing	18% @ 1:30	3:19	Call Processing	100% @ 1:30	0:27	Call Processing	26% @ 1:30	3:19
Turnout Time	68% @ 1:30	2:05	Turnout Time	100% @ 1:30	1:14	Turnout Time	89% @ 1:30	2:03
Travel Time	81% @ 5:12	6:16	Travel Time	50% @ 5:12	5:41	Travel Time	81% @ 5:12	6:21
Total Reflex Time	65% @ 8:12	10:08	Total Reflex Time	50% @ 8:12	7:06	Total Reflex Time	68% @ 8:12	10:08

SCFA AGENDA ITEM 7

REQUEST

ACCEPT A PRESENTATION ON THE SOUTH COUNTY FIRE AUTHORITY FISCAL YEAR 2011-2012 ANNUAL REPORT

EXECUTIVE SUMMARY

The Annual Report is a summary of the department's accomplishments and activities for Fiscal Year 2011/2012.

DISCUSSION

The South County Fire Authority Annual Report presents the activities and accomplishments of the Authority during the 2011/2012 fiscal year. Information is provided from several areas that exemplify the department's numerous and diverse activities.

The Annual Report will be delivered to Board Members at the South County Fire Authority meeting. A copy is posted on the City Website and also available in the City Clerk's office.

FISCAL IMPACT

There is no fiscal impact related to receiving this report

RECOMMENDATION

Staff recommends the Board of Directors accept the presentation of the Fiscal Year 2011-2012 South County Fire Authority Annual Report.

Prepared by: Steve Hanlon, Fire Division Chief

Reviewed by: Al Nero, Fire Chief

Approved by: Leon Churchill, Jr., Executive Director

SCFA AGENDA ITEM 8

REQUEST

INTENT TO SCHEDULE A SPECIAL JOINT MEETING OF THE CITY COUNCIL AND THE TRACY RURAL FIRE PROTECTION DISTRICT BOARD TO JOINTLY PREPARE A FY 13-14 BUDGET FOR THE SOUTH COUNTY FIRE AUTHORITY

EXECUTIVE SUMMARY

The Joint Exercise of Powers Agreement for the South County Fire Authority states the City and District shall meet and jointly prepare a recommended budget for the following fiscal year for Fire Protection Services and Fire Dispatch Services. It further states that on or before July 1 of each fiscal year, the Board of Directors of the South County Fire Authority shall adopt an annual budget for maintenance and operations costs each year, which budget shall be based on the budget recommended by the City and District.

DISCUSSION

Per the Joint Exercise of Powers Agreement for the South County Fire Authority, Article VI Funding, Section 6.1, Annual Budget, the City and District shall meet and jointly prepare a recommended budget for the Authority for the following fiscal year for Fire Protection Services and Fire Dispatch Services.

In preparation of the City of Tracy's upcoming FY 13-14 budget development, a special joint meeting of the Tracy City Council and Tracy Rural Fire Protection District would be necessary. It is proposed that the joint meeting be scheduled in April 2013, with the date and time to be determined.

At the direction of the South County Fire Authority Board, the Fire Chief will prepare staff reports for both the Tracy City Council and Tracy Rural Fire Protection District Board so that each agency may discuss the request to schedule a special joint meeting in April 2013.

FISCAL IMPACT

There is no fiscal impact related to this item.

RECOMMENDATION

That the Board of Directors of the South County Fire Authority direct the Fire Chief to prepare a staff report for the Tracy City Council and Tracy Rural Fire Protection District Board so that each agency may discuss the request to schedule a special joint meeting in April 2013, date and time to be determined, of the Tracy City Council and Tracy Rural Fire Protection District to jointly prepare a recommended FY 13-14 budget for the Authority.

Prepared/Reviewed by: Alford Nero, Fire Chief
Approved by: Leon Churchill Jr., Executive Director