



# ACEforward



## ACEforward Tracy City Council Presentation September 6, 2016





# Current ACE Connectivity Map and Schedule

**ACE**  
Route and Stations

- Light Rail
- BART
- CalTrain
- Capitol Corridor
- San Joaquin Corridor



## WESTBOUND TRAINS

	ACE 1	ACE 3	ACE 5	ACE 7
Stockton	4:20AM	5:35AM	6:40AM	7:05AM
Tracy	4:51AM	6:06AM	7:11AM	7:36AM
Pleasanton	5:33AM	6:48AM	7:53AM	8:18AM
Great Am.	6:13AM	7:28AM	8:33AM	8:58AM
San Jose	6:32AM	7:47AM	8:52AM	9:17AM

## EASTBOUND TRAINS

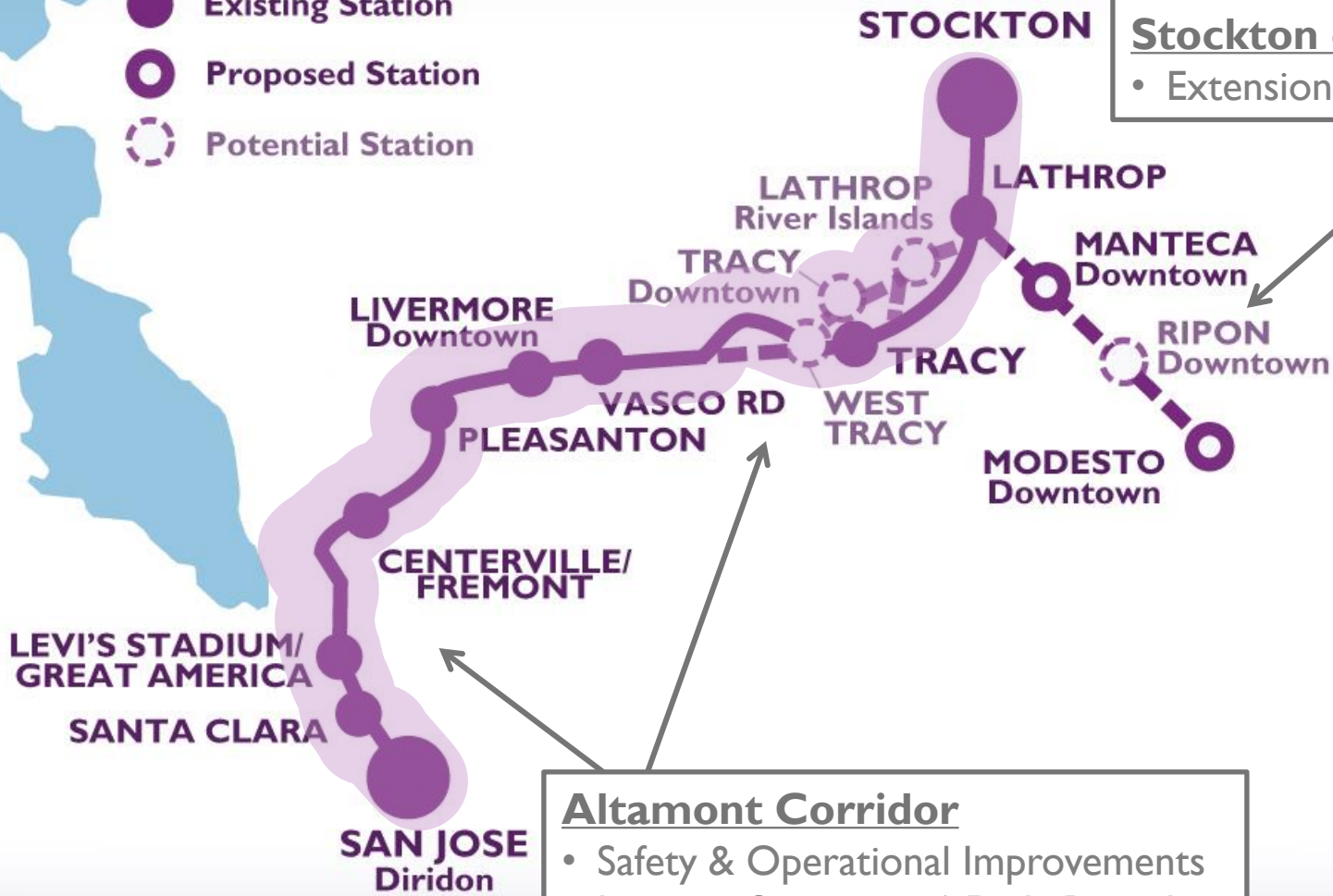
	ACE 4	ACE 6	ACE 8	ACE 10
San Jose	3:35PM	4:35PM	5:35PM	6:38PM
Great Am.	3:49PM	4:49PM	5:49PM	6:52PM
Pleasanton	4:28PM	5:28PM	6:28PM	7:31PM
Tracy	5:11PM	6:11PM	7:11PM	8:14PM
Stockton	5:47PM	6:47PM	7:47PM	8:50PM





# ACEforward Project-Level Analysis

- Existing Station
- Proposed Station
- Potential Station

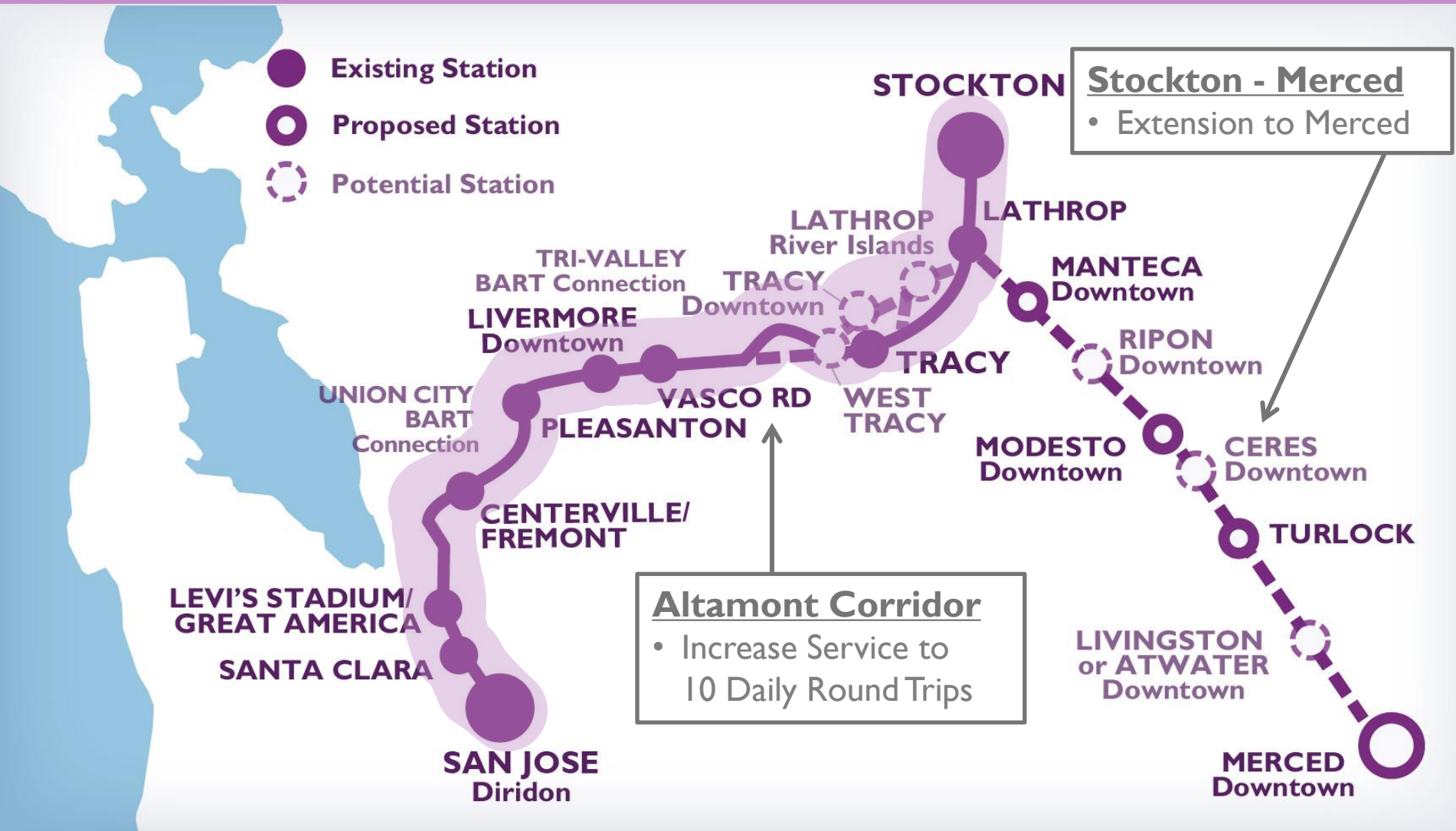


**Stockton - Modesto**  
 • Extension to Modesto

**Altamont Corridor**  
 • Safety & Operational Improvements  
 • Increase Service to 6 Daily Round Trips



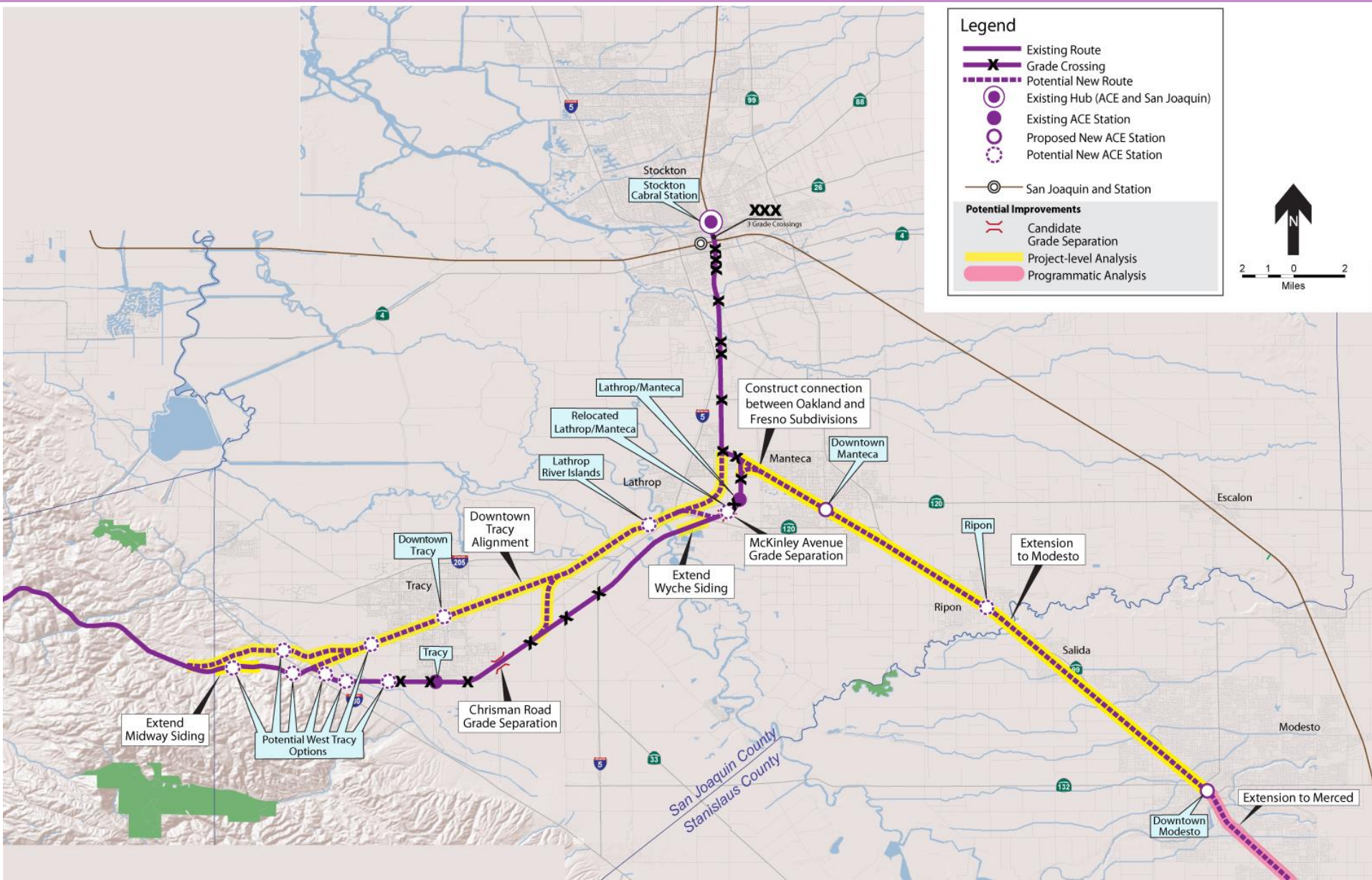
# ACEforward Program-Level Analysis







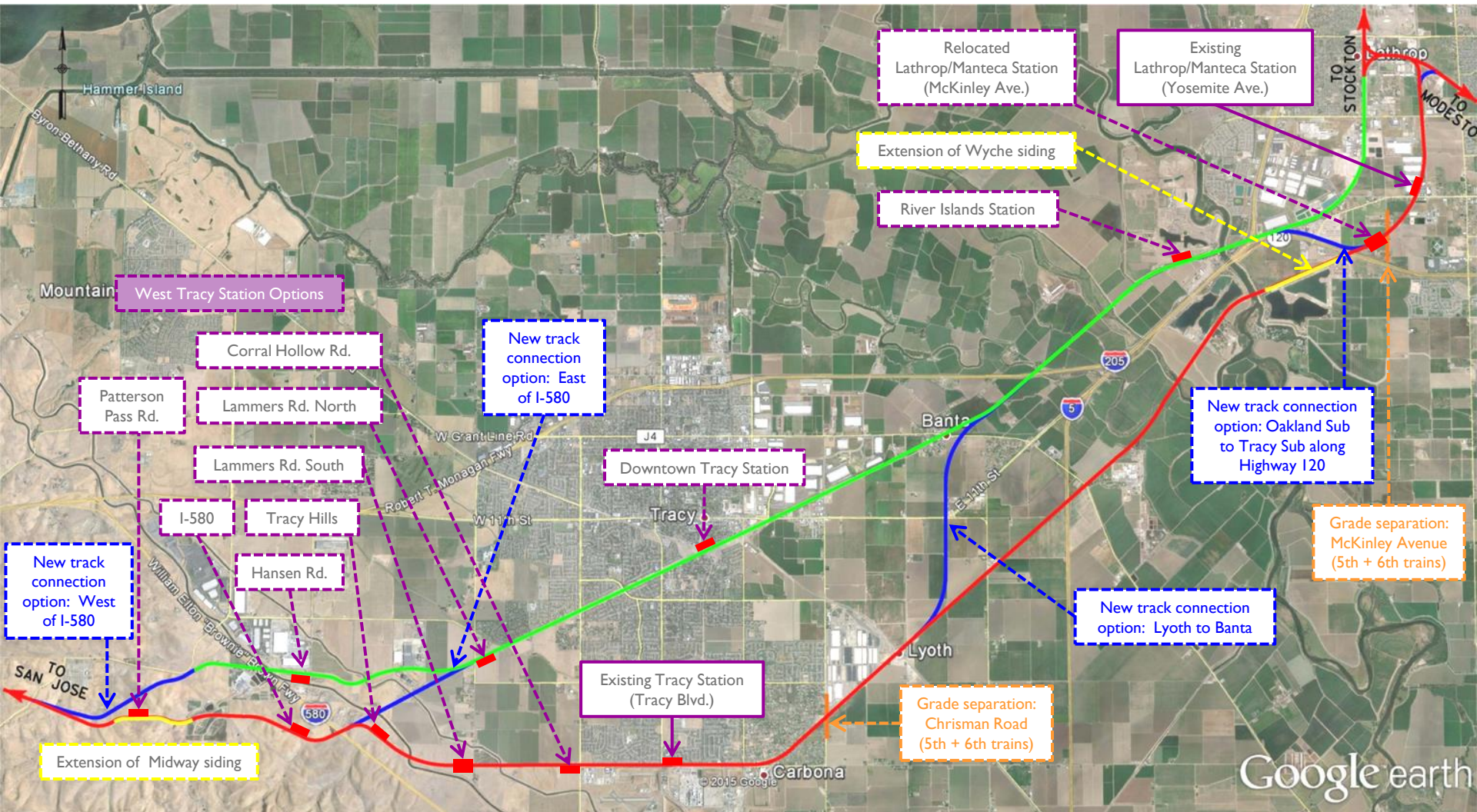
# San Joaquin Valley







# South County Options



Google earth



# ACEforward Project Schedule

Activity	Schedule
Alternatives Description	June 2016
In Progress Design	August 2015 – May 2016
In Progress Environmental Affected Environment	October 2015 – September 2016
In Progress Environmental Consequences Analysis	December 2015 – November 2016
Administrative Draft EIR	September 2016
Full Package Design	July 2016
Draft EIR + Public Review	November 2016
Final EIR	June 2017



# ACEforward Town Hall Meetings: San Joaquin County

Meeting	Location	Date & Time
Tracy	Council Chambers 333 Civic Center Dr. Tracy, CA	Wednesday, September 7 7:00-9:00 p.m.
Lathrop	Lathrop City Hall 390 Towne Centre Dr. Lathrop, CA	Monday, September 12 7:00-9:00 p.m.
Manteca	Manteca City Hall 1001 W. Center St. Manteca, CA	Thursday, September 15 7:00-9:00 p.m.
Mountain House	Mountain House CSD Office 230 Sterling Dr. Tracy, CA	Thursday, September 22 7:00-9:00 p.m.